

For Research Use Only

TMEM208 Polyclonal antibody

Catalog Number: 23882-1-AP

Featured Product

4 Publications



Basic Information

Catalog Number:

23882-1-AP

Size:

650 ug/ml

Source:

Rabbit

Isotype:

IgG

Immunogen Catalog Number:

AG20845

GenBank Accession Number:

BC003080

GeneID (NCBI):

29100

UNIPROT ID:

Q9BTX3

Full Name:

transmembrane protein 208

Calculated MW:

173 aa, 20 kDa

Observed MW:

19-29 kDa

Purification Method:

Antigen Affinity purified

Recommended Dilutions:

WB 1:200-1:1000

IHC 1:50-1:500

Applications

Tested Applications:

WB, IHC, ELISA

Cited Applications:

WB, IHC

Species Specificity:

human, mouse

Cited Species:

human

Note-IHC: suggested antigen retrieval with TE buffer pH 9.0; (*) Alternatively, antigen retrieval may be performed with citrate buffer pH 6.0

Positive Controls:

WB : mouse brain tissue,

IHC : human stomach tissue,

Background Information

Transmembrane protein 208 (TMEM208) can regulate both autophagy and ER stress. When overexpressed, TMEM208 impaired autophagy as characterized by the decrease of the accumulation of LC3-II, decreased degradation of autophagic substrates, and reduced expression of critical effectors and vital molecules of the ER stress and autophagy processes. (PMID: 23691174)

Notable Publications

Author	Pubmed ID	Journal	Application
Xihui Liu	35654861	Nat Cancer	WB
Brianna E Talbot	31266804	J Biol Chem	WB
Yan Li	39692812	J Mammary Gland Biol Neoplasia	WB,IHC

Storage

Storage:

Store at -20°C. Stable for one year after shipment.

Storage Buffer:

PBS with 0.02% sodium azide and 50% glycerol pH 7.3.

Aliquoting is unnecessary for -20°C storage

For technical support and original validation data for this product please contact:

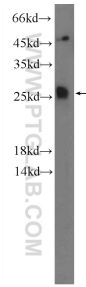
T: 4006900926

E: Proteintech-CN@ptglab.com

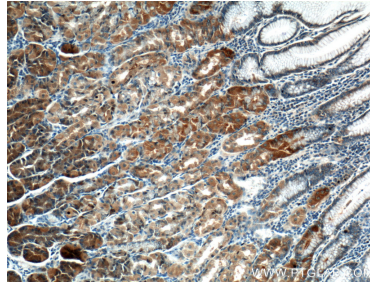
W: ptgcn.com

This product is exclusively available under Proteintech Group brand and is not available to purchase from any other manufacturer.

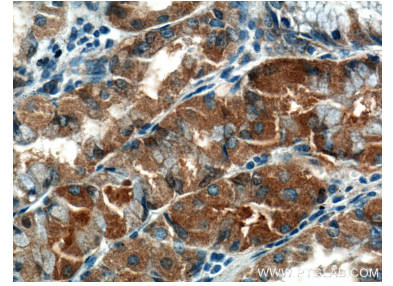
Selected Validation Data



mouse brain tissue were subjected to SDS PAGE followed by western blot with 23882-1-AP (TMEM208 Antibody) at dilution of 1:300 incubated at room temperature for 1.5 hours.



Immunohistochemical analysis of paraffin-embedded human stomach tissue slide using 23882-1-AP (TMEM208 Antibody) at dilution of 1:200 (under 10x lens).



Immunohistochemical analysis of paraffin-embedded human stomach tissue slide using 23882-1-AP (TMEM208 Antibody) at dilution of 1:200 (under 40x lens).