

For Research Use Only

# CLEC14A Polyclonal antibody

Catalog Number: 23964-1-AP **1 Publications**



## Basic Information

**Catalog Number:**

23964-1-AP

**Size:**

500 µg/ml

**Source:**

Rabbit

**Isotype:**

IgG

**Immunogen Catalog Number:**

AG21081

**GenBank Accession Number:**

BC031567

**GeneID (NCBI):**

161198

**UNIPROT ID:**

Q86T13

**Full Name:**

C-type lectin domain family 14, member A

**Calculated MW:**

490 aa, 52 kDa

**Observed MW:**

52 kDa

**Purification Method:**

Antigen Affinity purified

**Recommended Dilutions:**

WB 1:1000-1:4000

## Applications

**Tested Applications:**

FC, WB, ELISA

**Cited Applications:**

IHC, WB

**Species Specificity:**

human, mouse, rat

**Cited Species:**

human, mouse

**Positive Controls:**

WB: mouse brain tissue, mouse skeletal muscle tissue, human heart tissue, rat brain tissue

## Background Information

CLEC14A is a single-pass type I transmembrane protein whose extracellular domain consists of a C-type lectin-like domain (CTLD), a series of EGF-like domains, and a sushi-like domain (PMID: 23644659). CLEC14A is a member of the C-type lectin domain superfamily that also includes endosialin, thrombomodulin and CD93 (PMID: 16336259). It has been reported that CLEC14A is specifically expressed in endothelial cells and mediates cell to cell adhesion (PMID: 21095181). CLEC14A may be involved in tumor angiogenesis (PMID: 21706054; 23644659).

## Notable Publications

Author	Pubmed ID	Journal	Application
Zeyu Su	34107098	FASEB J	WB,IHC

## Storage

**Storage:**

Store at -20°C. Stable for one year after shipment.

**Storage Buffer:**

PBS with 0.02% sodium azide and 50% glycerol pH 7.3.

Aliquoting is unnecessary for -20°C storage

For technical support and original validation data for this product please contact:

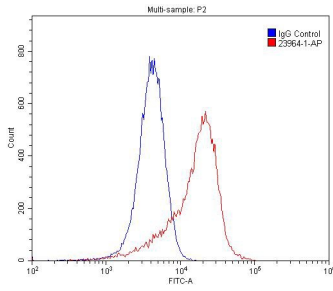
T: 4006900926

E: [Proteintech-CN@ptglab.com](mailto:Proteintech-CN@ptglab.com)

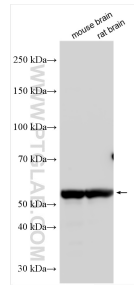
W: [ptgcn.com](http://ptgcn.com)

**This product is exclusively available under Proteintech Group brand and is not available to purchase from any other manufacturer.**

## Selected Validation Data



1X10<sup>6</sup> HUVEC cells were stained with 0.2ug CLEC14A antibody (23964-1-AP, red) and control antibody (blue). Fixed with 4% PFA blocked with 3% BSA (30 min). Alexa Fluor 488-conjugated AffiniPure Goat Anti-Rabbit IgG(H+L) with dilution 1:1500.



Various lysates were subjected to SDS PAGE followed by western blot with 23964-1-AP (CLEC14A antibody) at dilution of 1:2000 incubated at room temperature for 1.5 hours.