

For Research Use Only

EB3 Polyclonal antibody

Catalog Number: 23974-1-AP **3 Publications**



Basic Information

Catalog Number:

23974-1-AP

Size:

500 µg/ml

Source:

Rabbit

Isotype:

IgG

Immunogen Catalog Number:

AG21148

GenBank Accession Number:

BC011557

GeneID (NCBI):

22924

UNIPROT ID:

Q9UPY8

Full Name:

microtubule-associated protein,
RP/EB family, member 3

Calculated MW:

32 kDa

Observed MW:

30-36 kDa

Purification Method:

Antigen Affinity purified

Recommended Dilutions:

WB 1:500-1:2000

IHC 1:20-1:200

IF-P 1:50-1:500

Applications

Tested Applications:

IF-P, IHC, WB, ELISA

Cited Applications:

WB, IF

Species Specificity:

human, mouse, rat

Cited Species:

human, mouse, rat

Note-IHC: suggested antigen retrieval with TE buffer pH 9.0; (*) Alternatively, antigen retrieval may be performed with citrate buffer pH 6.0

Positive Controls:

WB: mouse brain tissue, rat brain tissue

IHC: human skeletal muscle tissue, human brain tissue, mouse brain tissue

IF-P: mouse testis tissue,

Background Information

Notable Publications

Author	Pubmed ID	Journal	Application
Hai-Qing Tu	30538248	Nat Commun	
Shi-Yan Sun	38767486	Neural Regen Res	IF
Valentina Grande	37178194	Cell Tissue Res	WB

Storage

Storage:

Store at -20°C. Stable for one year after shipment.

Storage Buffer:

PBS with 0.02% sodium azide and 50% glycerol pH 7.3.

Aliquoting is unnecessary for -20°C storage

For technical support and original validation data for this product please contact:

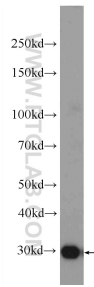
T: 4006900926

E: Proteintech-CN@ptglab.com

W: ptgcn.com

This product is exclusively available under Proteintech Group brand and is not available to purchase from any other manufacturer.

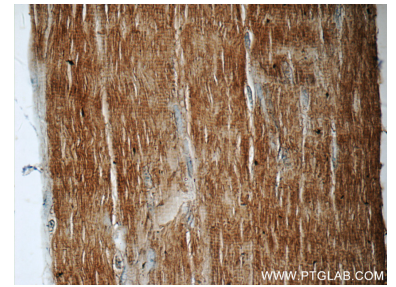
Selected Validation Data



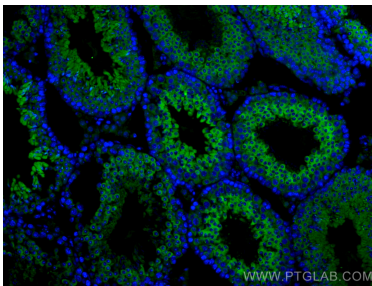
mouse brain tissue were subjected to SDS PAGE followed by western blot with 23974-1-AP (EB3 antibody at dilution of 1:1000 incubated at room temperature for 1.5 hours.



Immunohistochemical analysis of paraffin-embedded human skeletal muscle tissue slide using 23974-1-AP (EB3 antibody at dilution of 1:50 (under 10x lens).



Immunohistochemical analysis of paraffin-embedded human skeletal muscle tissue slide using 23974-1-AP (EB3 antibody at dilution of 1:50 (under 40x lens).



Immunofluorescent analysis of (4% PFA) fixed mouse testis tissue using EB3 antibody (23974-1-AP) at dilution of 1:200 and CoraLite®488-Conjugated AffiniPure Goat Anti-Rabbit IgG(H+L).