

For Research Use Only

TMEM59 Polyclonal antibody

Catalog Number: 24134-1-AP **2 Publications**



Basic Information

Catalog Number: 24134-1-AP	GenBank Accession Number: BC016374	Purification Method: Antigen affinity purification
Size: 300 µg/ml	GeneID (NCBI): 9528	Recommended Dilutions: WB 1:200-1:1000 IHC 1:20-1:200 IF 1:10-1:100
Source: Rabbit	UNIPROT ID: Q9BXS4	
Isotype: IgG	Full Name: transmembrane protein 59	
Immunogen Catalog Number: AG21150	Calculated MW: 36 kDa	
	Observed MW: 41 kDa	

Applications

Tested Applications: IF/ICC, IHC, WB, ELISA	Positive Controls: WB : MCF-7 cells, IHC : human breast cancer tissue, human liver tissue IF : HepG2 cells,
Cited Applications: WB	
Species Specificity: human	
Cited Species: human	
Note-IHC: suggested antigen retrieval with TE buffer pH 9.0; (*) Alternatively, antigen retrieval may be performed with citrate buffer pH 6.0	

Background Information

TMEM59 is a regulator of autophagy in response to bacterial infection. Overexpression of this protein has been found to promote apoptosis in a glioma cell line. Alternative splicing of TMEM59 results in multiple transcript variants.

Notable Publications

Author	Pubmed ID	Journal	Application
Charles P Hinzman	35656858	J Extracell Vesicles	WB
Julian Nüchel	34245671	Mol Cell	WB

Storage

Storage:
Store at -20°C. Stable for one year after shipment.
Storage Buffer:
PBS with 0.02% sodium azide and 50% glycerol pH 7.3.
Aliquoting is unnecessary for -20°C storage

For technical support and original validation data for this product please contact:

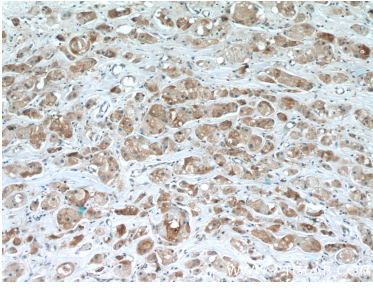
T: 4006900926

E: Proteintech-CN@ptglab.com

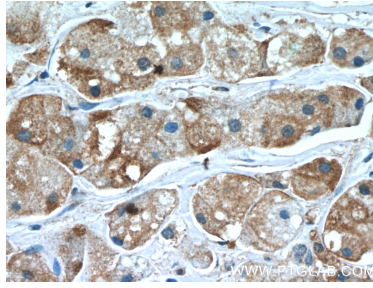
W: ptgcn.com

This product is exclusively available under Proteintech Group brand and is not available to purchase from any other manufacturer.

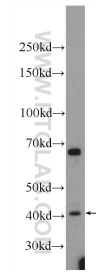
Selected Validation Data



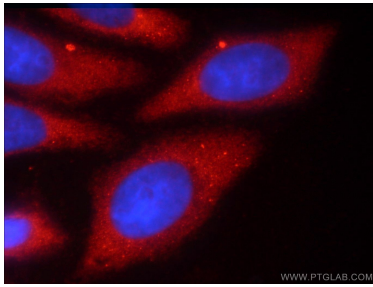
Immunohistochemical analysis of paraffin-embedded human breast cancer slide using 24134-1-AP (TMEM59 Antibody) at dilution of 1:50 (under 10x lens).



Immunohistochemical analysis of paraffin-embedded human breast cancer slide using 24134-1-AP (TMEM59 Antibody) at dilution of 1:50 (under 40x lens).



MCF-7 cells were subjected to SDS PAGE followed by western blot with 24134-1-AP (TMEM59 Antibody) at dilution of 1:300 incubated at room temperature for 1.5 hours.



Immunofluorescent analysis of HepG2 cells using 24134-1-AP (TMEM59 antibody) at dilution of 1:25 and Rhodamine-Goat anti-Rabbit IgG.