

For Research Use Only

# TMEM63B Polyclonal antibody

Catalog Number: 24226-1-AP



## Basic Information

|   |  |  |
|---|--|--|
| <b>Catalog Number:</b><br>24226-1-AP        | <b>GenBank Accession Number:</b><br>BC136769   | <b>Purification Method:</b><br>Antigen Affinity purified |
| <b>Size:</b><br>550 ug/ml                   | <b>GeneID (NCBI):</b><br>55362                 | <b>Recommended Dilutions:</b><br>WB 1:500-1:1000         |
| <b>Source:</b><br>Rabbit                    | <b>UNIPROT ID:</b><br>Q5T3F8                   |  |
| <b>Isotype:</b><br>IgG                      | <b>Full Name:</b><br>transmembrane protein 63B |  |
| <b>Immunogen Catalog Number:</b><br>AG21573 | <b>Calculated MW:</b><br>832 aa, 95 kDa        |  |
|   | <b>Observed MW:</b><br>95 kDa                  |  |

## Applications

|   |  |
|---|--|
| <b>Tested Applications:</b><br>WB, ELISA    | <b>Positive Controls:</b><br>WB : mouse kidney tissue, |
| <b>Species Specificity:</b><br>human, mouse |  |

## Background Information

TMEM63B, also known as C6orf110, belongs to the TMEM63 family. TMEM63B is a mechanosensitive cation channel activated by hypoosmotic stress and mechanic stimulation. Genetic deletion of TMEM63B is a cause of necroptosis of outer hair cells (OHCs) and progressive hearing loss (PMID: 32375046).

## Storage

**Storage:**  
Store at -20°C. Stable for one year after shipment.  
**Storage Buffer:**  
PBS with 0.02% sodium azide and 50% glycerol pH 7.3.  
Aliquoting is unnecessary for -20°C storage

For technical support and original validation data for this product please contact:

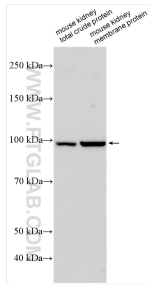
T: 4006900926

E: [Proteintech-CN@ptglab.com](mailto:Proteintech-CN@ptglab.com)

W: [ptgcn.com](http://ptgcn.com)

**This product is exclusively available under Proteintech Group brand and is not available to purchase from any other manufacturer.**

## Selected Validation Data



Various lysates were subjected to SDS PAGE followed by western blot with 24226-1-AP (TMEM63B antibody) at dilution of 1:500 incubated at room temperature for 1.5 hours.