

For Research Use Only

# RFTN1 Polyclonal antibody

Catalog Number: 24289-1-AP

Featured Product

3 Publications



## Basic Information

<b>Catalog Number:</b> 24289-1-AP	<b>GenBank Accession Number:</b> BC100667	<b>Purification Method:</b> Antigen affinity purification
<b>Size:</b> 600 ug/ml	<b>GeneID (NCBI):</b> 23180	<b>Recommended Dilutions:</b> WB 1:1000-1:4000 IHC 1:50-1:600
<b>Source:</b> Rabbit	<b>UNIPROT ID:</b> Q14699	
<b>Isotype:</b> IgG	<b>Full Name:</b> raftlin, lipid raft linker 1	
<b>Immunogen Catalog Number:</b> AG17264	<b>Calculated MW:</b> 578 aa, 63 kDa	
	<b>Observed MW:</b> 63-70 kDa	

## Applications

<b>Tested Applications:</b> WB, IHC, ELISA	<b>Positive Controls:</b> WB : HeLa cells, Raji cells IHC : human tonsillitis tissue, human spleen tissue
<b>Cited Applications:</b> WB, IF, IP	
<b>Species Specificity:</b> human	
<b>Cited Species:</b> human, mouse	
<b>Note-IHC: suggested antigen retrieval with TE buffer pH 9.0; (*) Alternatively, antigen retrieval may be performed with citrate buffer pH 6.0</b>	

## Background Information

Raftlin (RFTN1) was originally identified as a major raft protein with molecular mass of 63 kDa in B cells that colocalized with BCR in the lipid raft before and after BCR activation. RFTN1 possesses fatty acylation sites at the N terminus, it predominantly localizes in the cytoplasm in human epithelial cells and monocyte-derived DCs (Mo-DCs) (PMID: 27022195). Human RFTN1 protein estimated to be 63-70 kDa by SDS-PAGE, and this discrepancy may be due to the acidic nature of the protein, which has a calculated isoelectric point of 5.3 (PMID: 12805216).

## Notable Publications

Author	Pubmed ID	Journal	Application
Chaowei Deng	35490655	Pathol Res Pract	WB
Asha L Bayliss	32274611	Angiogenesis	IF,IP
Max A Thorwald	36536382	Alzheimers Dement	WB

## Storage

**Storage:**  
Store at -20°C. Stable for one year after shipment.  
**Storage Buffer:**  
PBS with 0.02% sodium azide and 50% glycerol pH 7.3.  
Aliquoting is unnecessary for -20°C storage

For technical support and original validation data for this product please contact:

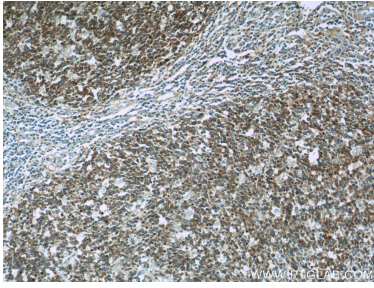
T: 4006900926

E: Proteintech-CN@ptglab.com

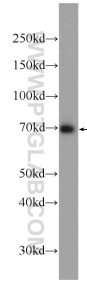
W: ptgcn.com

This product is exclusively available under Proteintech Group brand and is not available to purchase from any other manufacturer.

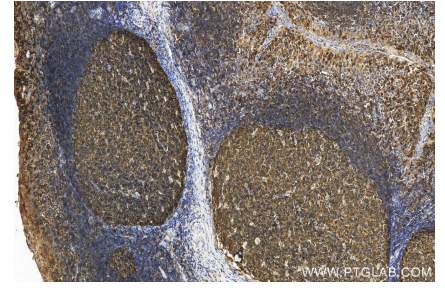
## Selected Validation Data



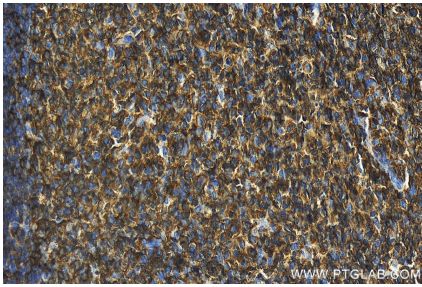
Immunohistochemical analysis of paraffin-embedded human tonsillitis slide using 24289-1-AP (RFTN1 Antibody) at dilution of 1:50 (under 10x lens).



HeLa cells were subjected to SDS PAGE followed by western blot with 24289-1-AP (RFTN1 Antibody) at dilution of 1:2000 incubated at room temperature for 1.5 hours.



Immunohistochemical analysis of paraffin-embedded human tonsillitis tissue slide using 24289-1-AP (RFTN1 antibody) at dilution of 1:600 (under 20x lens). Heat mediated antigen retrieval with Tris-EDTA buffer (pH 9.0).



Immunohistochemical analysis of paraffin-embedded human tonsillitis tissue slide using 24289-1-AP (RFTN1 antibody) at dilution of 1:600 (under 20x lens). Heat mediated antigen retrieval with Tris-EDTA buffer (pH 9.0).