

For Research Use Only

# C5orf24 Polyclonal antibody

Catalog Number: 24319-1-AP **1 Publications**



## Basic Information

**Catalog Number:**

24319-1-AP

**Size:**

850 µg/ml

**Source:**

Rabbit

**Isotype:**

IgG

**Immunogen Catalog Number:**

AG19534

**GenBank Accession Number:**

BC053677

**GeneID (NCBI):**

134553

**UNIPROT ID:**

Q7Z6I8

**Full Name:**

chromosome 5 open reading frame 24

**Calculated MW:**

188 aa, 20 kDa

**Observed MW:**

23 kDa

**Purification Method:**

Antigen affinity purification

**Recommended Dilutions:**

WB 1:500-1:2000

IP 0.5-4.0 µg for 1.0-3.0 mg of total protein lysate

IHC 1:50-1:500

IF/ICC 1:200-1:800

## Applications

**Tested Applications:**

WB, IP, IF/ICC, IHC, ELISA, FC (Intra)

**Cited Applications:**

WB

**Species Specificity:**

human

**Cited Species:**

pig

**Note-IHC: suggested antigen retrieval with TE buffer pH 9.0; (\*) Alternatively, antigen retrieval may be performed with citrate buffer pH 6.0**

**Positive Controls:**

WB : HEK-293 cells,

IP : HEK-293 cells,

IHC : human pancreas tissue, human kidney tissue

IF/ICC : HEK-293 cells,

## Background Information

C5orf24 has two isoforms with MW 20 kDa and 16 kDa. For phosphoserine modification, the MW is about 20-23 kDa.

## Notable Publications

Author	Pubmed ID	Journal	Application
Xu Ye	29887867	Front Immunol	WB

## Storage

**Storage:**

Store at -20°C. Stable for one year after shipment.

**Storage Buffer:**

PBS with 0.02% sodium azide and 50% glycerol pH 7.3.

Aliquoting is unnecessary for -20°C storage

For technical support and original validation data for this product please contact:

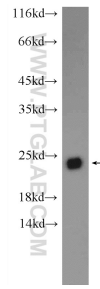
T: 4006900926

E: Proteintech-CN@ptglab.com

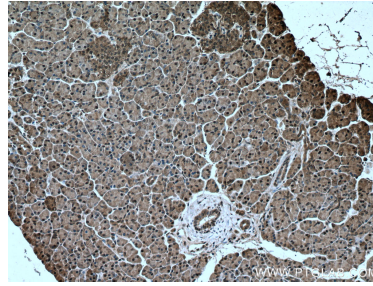
W: ptgcn.com

**This product is exclusively available under Proteintech Group brand and is not available to purchase from any other manufacturer.**

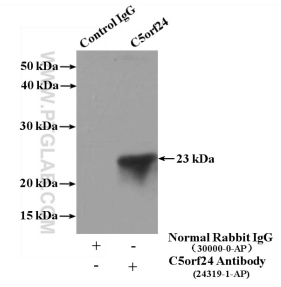
## Selected Validation Data



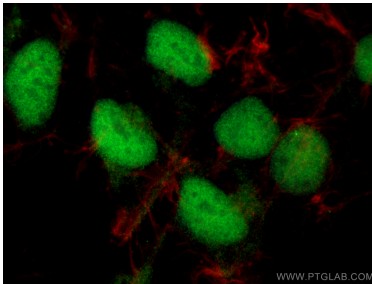
HEK-293 cells were subjected to SDS PAGE followed by western blot with 24319-1-AP (C5orf24 Antibody) at dilution of 1:1000 incubated at room temperature for 1.5 hours.



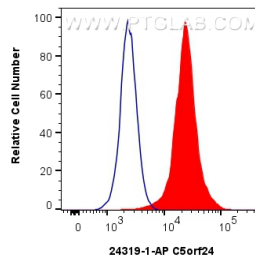
Immunohistochemical analysis of paraffin-embedded human pancreas tissue slide using 24319-1-AP (C5orf24 antibody) at dilution of 1:200 (under 10x lens. Heat mediated antigen retrieval with Tris-EDTA buffer (pH 9.0).



IP result of anti-C5orf24 (IP:24319-1-AP, 4ug; Detection:24319-1-AP 1:1000) with HEK-293 cells lysate 3200ug.



Immunofluorescent analysis of (4% PFA) fixed HEK-293 cells using C5orf24 antibody (24319-1-AP) at dilution of 1:400 and CoraLite@488-Conjugated AffiniPure Goat Anti-Rabbit IgG(H+L) (SA00013-2), CL594-Phalloidin (red).



$1 \times 10^6$  HEK-293 cells were intracellularly stained with 0.4 ug C5orf24 Polyclonal antibody (24319-1-AP) and CoraLite@488-Conjugated AffiniPure Goat Anti-Rabbit IgG(H+L) (SA00013-2)(red), or 0.4 ug Rabbit IgG control Rabbit PolyAb (30000-0-AP) (blue). Cells were fixed with 4% PFA and permeabilized with Flow Cytometry Perm Buffer (PF00011-C).