

For Research Use Only

IFT43 Polyclonal antibody

Catalog Number: 24338-1-AP **5 Publications**



Basic Information

Catalog Number: 24338-1-AP	GenBank Accession Number: BC010436	Purification Method: Antigen affinity purification
Size: 1000 µg/ml	GeneID (NCBI): 112752	Recommended Dilutions: IHC 1:20-1:200 IF 1:200-1:800
Source: Rabbit	UNIPROT ID: Q96FT9	
Isotype: IgG	Full Name: chromosome 14 open reading frame 179	
Immunogen Catalog Number: AG19434	Calculated MW: 213 aa, 24 kDa	

Applications

Tested Applications: IF/ICC, IHC, ELISA	Positive Controls: IHC : human testis tissue, IF : MDCK cells, hTERT-RPE1 cells
Cited Applications: IF, WB	
Species Specificity: human, canine	
Cited Species: human, mouse	
Note-IHC: suggested antigen retrieval with TE buffer pH 9.0; (*) Alternatively, antigen retrieval may be performed with citrate buffer pH 6.0	

Background Information

IFT43, encoded by C14ORF179, is a subunit of the intraflagellar transport complex A (IFT-A) of primary cilia. The IFT-A is implicated in retrograde ciliary transport along axonemal microtubules. Defects in subunits of IFT-A has been associated with skeletal ciliopathies, including Sensenbrenner syndrome, Jeune syndrome, and Ellis-van-Creveld syndrome. Mutations in C14ORF179 has been linked to Sensenbrenner syndrome. (21378380)

Notable Publications

Author	Pubmed ID	Journal	Application
Laura Vuolo	30320547	Elife	IF
Jack M Shireman	33855339	Brain	WB
Caleb S Hayes	31188487	J Cell Physiol	WB

Storage

Storage:
Store at -20°C. Stable for one year after shipment.
Storage Buffer:
PBS with 0.02% sodium azide and 50% glycerol pH 7.3.
Aliquoting is unnecessary for -20°C storage

For technical support and original validation data for this product please contact:

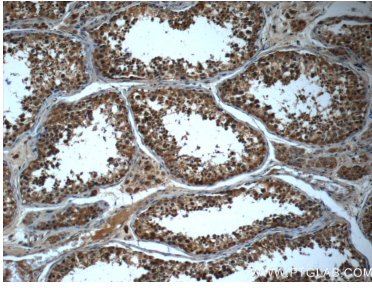
T: 4006900926

E: Proteintech-CN@ptglab.com

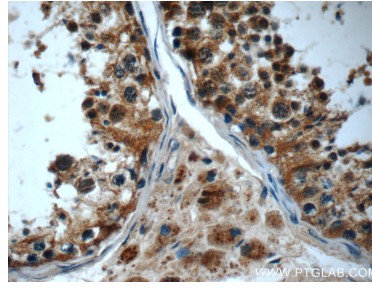
W: ptgcn.com

This product is exclusively available under Proteintech Group brand and is not available to purchase from any other manufacturer.

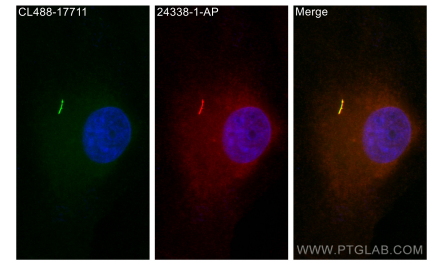
Selected Validation Data



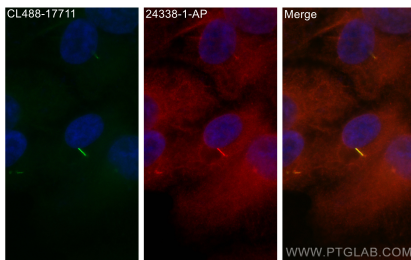
Immunohistochemical analysis of paraffin-embedded human testis slide using 24338-1-AP (IFT43 antibody at dilution of 1:50) (under 10x lens).



Immunohistochemical analysis of paraffin-embedded human testis slide using 24338-1-AP (IFT43 antibody at dilution of 1:50) (under 40x lens).



Immunofluorescent analysis of (-20°C Methanol) fixed MDCK cells using IFT43 antibody (24338-1-AP) at dilution of 1:400 and CoraLite® 594-Conjugated AffiniPure Goat Anti-Rabbit IgG(H+L), CoraLite® Plus 488 ARL13B antibody (CL488-17711, green).



Immunofluorescent analysis of (-20°C Methanol) fixed hTERT-RPE1 cells using IFT43 antibody (24338-1-AP) at dilution of 1:400 and CoraLite® 594-Conjugated AffiniPure Goat Anti-Rabbit IgG(H+L), CoraLite® Plus 488 ARL13B antibody (CL488-17711, green).