

For Research Use Only

# TMEM25 Polyclonal antibody

Catalog Number: 24361-1-AP

Featured Product

1 Publications



## Basic Information

<b>Catalog Number:</b> 24361-1-AP	<b>GenBank Accession Number:</b> BC051841	<b>Purification Method:</b> Antigen affinity purification
<b>Size:</b> 400 µg/ml	<b>GeneID (NCBI):</b> 84866	<b>Recommended Dilutions:</b> WB 1:5000-1:50000 IHC 1:250-1:1000
<b>Source:</b> Rabbit	<b>UNIPROT ID:</b> Q86YD3	
<b>Isotype:</b> IgG	<b>Full Name:</b> transmembrane protein 25	
<b>Immunogen Catalog Number:</b> AG19964	<b>Calculated MW:</b> 366 aa, 39 kDa	
	<b>Observed MW:</b> 40 kDa	

## Applications

<b>Tested Applications:</b> IHC, WB, ELISA	<b>Positive Controls:</b> WB : mouse liver tissue, rat liver tissue IHC : human liver tissue,
<b>Cited Applications:</b> WB, IF, CoIP	
<b>Species Specificity:</b> human, mouse, rat	
<b>Cited Species:</b> human, mouse	
<b>Note-IHC: suggested antigen retrieval with TE buffer pH 9.0; (*) Alternatively, antigen retrieval may be performed with citrate buffer pH 6.0</b>	

## Background Information

TMEM25 is a novel member of the immunoglobulin superfamily. BC042896 and AY358919 cDNAs are derived from human TMEM25 gene. TMEM25 isoform 1 (BC042896), consisting of exons 1-9, encodes a 366-aa transmembrane protein. TMEM25 isoform 2 (AY358919), consisting of exons 1-4 and 6-9, encodes a 322-aa secreted protein (PMID:15254712). Human TMEM25 gene are found to encode transmembrane-type as well as secreted-type proteins due to alternative splicing of exon-skipping type. TMEM25 mRNA is expressed in brain, including cerebellar cortex and hippocampus, as well as in neuroblastoma, brain tumors, and gastric cancer. TMEM25 is a target of pharmacogenomics in the field of oncology and regenerative medicine. TMEM25 mRNAs may be useful members of a panel of favorable prognostic and predictive markers for breast cancer( PMID:19776672).

## Notable Publications

Author	Pubmed ID	Journal	Application
Haiqing Zhang	31424425	J Clin Invest	WB,IF,CoIP

## Storage

**Storage:**  
Store at -20°C. Stable for one year after shipment.  
**Storage Buffer:**  
PBS with 0.02% sodium azide and 50% glycerol pH 7.3.  
Aliquoting is unnecessary for -20°C storage

For technical support and original validation data for this product please contact:

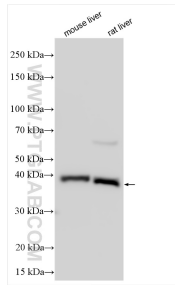
T: 4006900926

E: Proteintech-CN@ptglab.com

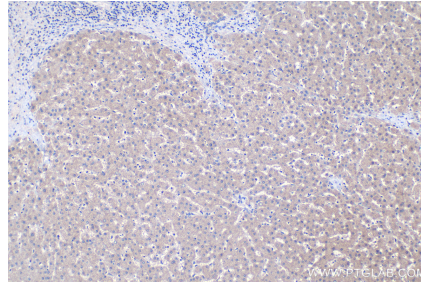
W: ptgcn.com

This product is exclusively available under Proteintech Group brand and is not available to purchase from any other manufacturer.

## Selected Validation Data



Various lysates were subjected to SDS PAGE followed by western blot with 24361-1-AP (TMEM25 antibody) at dilution of 1:10000 incubated at room temperature for 1.5 hours.



Immunohistochemical analysis of paraffin-embedded human liver tissue slide using 24361-1-AP (TMEM25 antibody) at dilution of 1:500 (under 10x lens). Heat mediated antigen retrieval with Tris-EDTA buffer (pH 9.0).