

For Research Use Only

MSL1 Polyclonal antibody

Catalog Number: 24373-1-AP

Featured Product

3 Publications



Basic Information

Catalog Number:

24373-1-AP

Size:

550 µg/ml

Source:

Rabbit

Isotype:

IgG

Immunogen Catalog Number:

AG18024

GenBank Accession Number:

BC122543

GeneID (NCBI):

339287

UNIPROT ID:

Q68DK7

Full Name:

male-specific lethal 1 homolog
(Drosophila)

Calculated MW:

614 aa, 67 kDa

Observed MW:

67 kDa

Purification Method:

Antigen affinity purification

Recommended Dilutions:

WB 1:500-1:1000

Applications

Tested Applications:

WB, ELISA

Cited Applications:

WB

Species Specificity:

human

Cited Species:

human

Positive Controls:

WB : HeLa cells,

Background Information

Notable Publications

| Author | Pubmed ID | Journal | Application |
|-------------|-----------|-------------------|-------------|
| Tao Wei | 35416545 | Cell Mol Life Sci | WB |
| Wenqi Chen | 39250546 | FEBS J | WB |
| Tingting Wu | 37240065 | Int J Mol Sci | WB |

Storage

Storage:

Store at -20°C. Stable for one year after shipment.

Storage Buffer:

PBS with 0.02% sodium azide and 50% glycerol pH 7.3.

Aliquoting is unnecessary for -20°C storage

For technical support and original validation data for this product please contact:

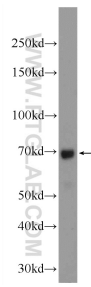
T: 4006900926

E: Proteintech-CN@ptglab.com

W: ptgcn.com

This product is exclusively available under Proteintech Group brand and is not available to purchase from any other manufacturer.

Selected Validation Data



HeLa cells were subjected to SDS PAGE followed by western blot with 24373-1-AP (MSL1 Antibody) at dilution of 1:600 incubated at room temperature for 1.5 hours.