

For Research Use Only

TRIM16 Polyclonal antibody

Catalog Number: 24403-1-AP

Featured Product

9 Publications



Basic Information

Catalog Number:

24403-1-AP

Size:

1000 µg/ml

Source:

Rabbit

Isotype:

IgG

Immunogen Catalog Number:

AG21406

GenBank Accession Number:

BC015674

GeneID (NCBI):

10626

UNIPROT ID:

O95361

Full Name:

tripartite motif-containing 16

Calculated MW:

64 kDa

Observed MW:

64 kDa

Purification Method:

Antigen affinity purification

Recommended Dilutions:

WB 1:500-1:1000

IP 0.5-4.0 µg for 1.0-3.0 mg of total protein lysate

IHC 1:50-1:500

IF/ICC 1:20-1:200

Applications

Tested Applications:

IF/ICC, IHC, IP, WB, ELISA

Cited Applications:

WB, IF, IHC

Species Specificity:

human

Cited Species:

human

Note-IHC: suggested antigen retrieval with TE buffer pH 9.0; (*) Alternatively, antigen retrieval may be performed with citrate buffer pH 6.0

Positive Controls:

WB : HepG2 cells,

IP : HeLa cells,

IHC : human testis tissue, human small intestine tissue

IF/ICC : HepG2 cells,

Background Information

Notable Publications

Author	Pubmed ID	Journal	Application
Yi Zhao	33091421	Exp Cell Res	WB
Shuai Li	36450665	Cell Prolif	WB
Leilei Zheng	31812473	J Genet Genomics	WB,IHC

Storage

Storage:

Store at -20°C. Stable for one year after shipment.

Storage Buffer:

PBS with 0.02% sodium azide and 50% glycerol pH 7.3.

Aliquoting is unnecessary for -20°C storage

For technical support and original validation data for this product please contact:

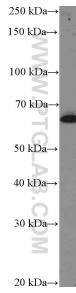
T: 4006900926

E: Proteintech-CN@ptglab.com

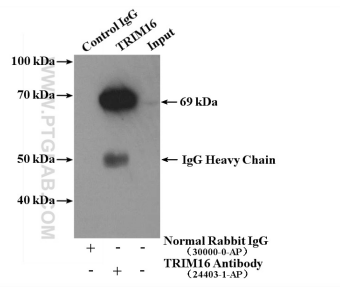
W: ptgcn.com

This product is exclusively available under Proteintech Group brand and is not available to purchase from any other manufacturer.

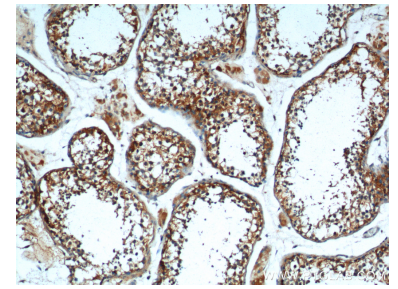
Selected Validation Data



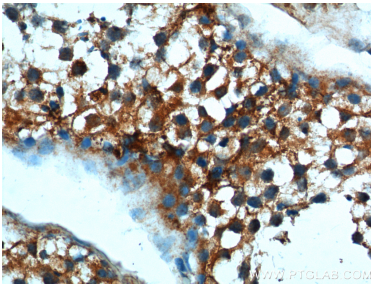
HepG2 cells were subjected to SDS PAGE followed by western blot with 24403-1-AP (TRIM16 Antibody) at dilution of 1:600 incubated at room temperature for 1.5 hours.



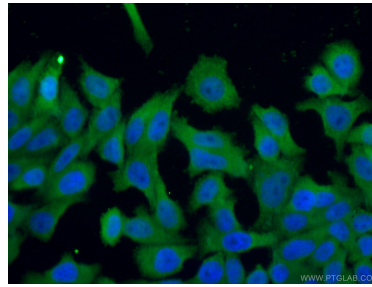
IP result of anti-TRIM16 (IP:24403-1-AP, 4ug; Detection:24403-1-AP 1:300) with HeLa cells lysate 3960ug.



Immunohistochemical analysis of paraffin-embedded human testis tissue slide using 24403-1-AP (TRIM16 Antibody) at dilution of 1:200 (under 10x lens).



Immunohistochemical analysis of paraffin-embedded human testis tissue slide using 24403-1-AP (TRIM16 Antibody) at dilution of 1:200 (under 40x lens).



Immunofluorescent analysis of (4% PFA) fixed HepG2 cells using 24403-1-AP (TRIM16 antibody) at dilution of 1:50 and Alexa Fluor 488-conjugated AffiniPure Goat Anti-Rabbit IgG(H+L).