

For Research Use Only

# PPP1R10 Polyclonal antibody

Catalog Number: 24450-1-AP **1 Publications**



## Basic Information

**Catalog Number:**

24450-1-AP

**Size:**

350 µg/ml

**Source:**

Rabbit

**Isotype:**

IgG

**Immunogen Catalog Number:**

AG20091

**GenBank Accession Number:**

BC150310

**GeneID (NCBI):**

5514

**UNIPROT ID:**

Q96QC0

**Full Name:**

protein phosphatase 1, regulatory (inhibitor) subunit 10

**Calculated MW:**

940 aa, 99 kDa

**Observed MW:**

99 kDa

**Purification Method:**

Antigen affinity purification

**Recommended Dilutions:**

WB 1:200-1:1000

IF/ICC 1:50-1:500

## Applications

**Tested Applications:**

IF/ICC, WB, ELISA

**Species Specificity:**

human

**Positive Controls:**

WB : HepG2 cells,

IF/ICC : HepG2 cells,

## Background Information

## Notable Publications

Author	Pubmed ID	Journal	Application
Simon Grelet	28825698	Nat Cell Biol	

## Storage

**Storage:**

Store at -20°C. Stable for one year after shipment.

**Storage Buffer:**

PBS with 0.02% sodium azide and 50% glycerol pH 7.3.

Aliquoting is unnecessary for -20°C storage

For technical support and original validation data for this product please contact:

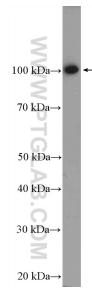
T: 4006900926

E: [Proteintech-CN@ptglab.com](mailto:Proteintech-CN@ptglab.com)

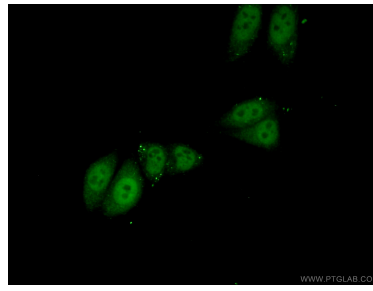
W: [ptgcn.com](http://ptgcn.com)

**This product is exclusively available under Proteintech Group brand and is not available to purchase from any other manufacturer.**

## Selected Validation Data



HepG2 cells were subjected to SDS PAGE followed by western blot with 24450-1-AP (PPP1R10 Antibody) at dilution of 1:300 incubated at room temperature for 1.5 hours.



Immunofluorescent analysis of (10% Formaldehyde) fixed HepG2 cells using 24450-1-AP (PPP1R10 antibody) at dilution of 1:50 and Alexa Fluor 488-conjugated AffiniPure Goat Anti-Rabbit IgG(H+L).