

For Research Use Only

Somatostatin (1-116aa) Polyclonal antibody

Catalog Number: 24496-1-AP

1 Publications



Basic Information

Catalog Number: 24496-1-AP	GenBank Accession Number: BC032625	Purification Method: Antigen affinity purification
Concentration: 800 µg/ml	GeneID (NCBI): 6750	Recommended Dilutions: IHC: 1:4000-1:16000 IF-P: 1:50-1:500
Source: Rabbit	UNIPROT ID: P61278	
Isotype: IgG	Full Name: somatostatin	
Immunogen Catalog Number: AG21294	Calculated MW: 13 kDa	

Applications

Tested Applications: IHC, IF-P, ELISA	Positive Controls:
Species Specificity: human, mouse	IHC : mouse pancreas tissue, IF-P : mouse pancreas tissue,

Note-IHC: suggested antigen retrieval with TE buffer pH 9.0; (*) Alternatively, antigen retrieval may be performed with citrate buffer pH 6.0

Background Information

Somatostatin is a peptide hormone that regulates the endocrine system and affects neurotransmission and cell proliferation via interaction with G protein-coupled somatostatin receptors and inhibition of the release of numerous secondary hormones. Somatostatin is a useful marker of D-cells of pancreatic islet cells. Somatostatin inhibits ins and glucagon secretion. Somatostatin has two active forms produced by alternative cleavage of a single preproprotein: one of 14 amino acids, the other of 28 amino acids. This antibody can recognize the full length and propeptide of Somatostatin.

Notable Publications

Author	Pubmed ID	Journal	Application
Ryo Hatano	39310764	iScience	

Storage

Storage:
Store at -20°C. Stable for one year after shipment.
Storage Buffer:
PBS with 0.02% sodium azide and 50% glycerol, pH7.3
Aliquoting is unnecessary for -20°C storage

For technical support and original validation data for this product please contact:

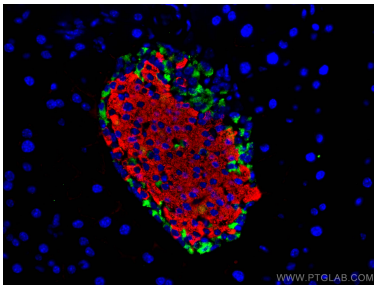
T: 4006900926

E: Proteintech-CN@ptglab.com

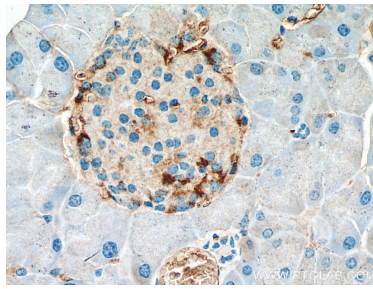
W: ptgcn.com

This product is exclusively available under Proteintech Group brand and is not available to purchase from any other manufacturer.

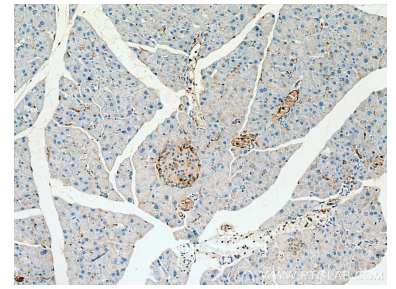
Selected Validation Data



Immunofluorescent analysis of (4% PFA) fixed mouse pancreas tissue using Somatostatin antibody (24496-1-AP) at dilution of 1:200 and CoraLite®488-Conjugated Goat Anti-Rabbit IgG(H+L), INS antibody (66198-1-Ig, Clone: 4B6A7, red).



Immunohistochemical analysis of paraffin-embedded mouse pancreas tissue slide using 24496-1-AP (Somatostatin antibody) at dilution of 1:8000 (under 40x lens). Heat mediated antigen retrieval with Tris-EDTA buffer (pH 9.0).



Immunohistochemical analysis of paraffin-embedded mouse pancreas tissue slide using 24496-1-AP (Somatostatin antibody) at dilution of 1:8000 (under 10x lens). Heat mediated antigen retrieval with Tris-EDTA buffer (pH 9.0).