

For Research Use Only

PGRMC2 Polyclonal antibody

Catalog Number: 24575-1-AP



Basic Information

Catalog Number: 24575-1-AP	GenBank Accession Number: BC016692	Purification Method: Antigen affinity purification
Size: 300 ug/ml	GeneID (NCBI): 10424	Recommended Dilutions: WB 1:1000-1:4000
Source: Rabbit	UNIPROT ID: O15173	IHC 1:50-1:500 IF/ICC 1:50-1:500
Isotype: IgG	Full Name: progesterone receptor membrane component 2	
Immunogen Catalog Number: AG20077	Calculated MW: 223 aa, 24 kDa	
	Observed MW: 22 kDa, 28 kDa	

Applications

Tested Applications:
WB, IHC, IF/ICC, ELISA

Species Specificity:
human

Note-IHC: suggested antigen retrieval with TE buffer pH 9.0; (*) Alternatively, antigen retrieval may be performed with citrate buffer pH 6.0

Positive Controls:

WB : HeLa cells, HepG2 cells, MCF-7 cells, SKOV-3 cells, human placenta tissue

IHC : human placenta tissue,

IF/ICC : HeLa cells,

Background Information

Membrane-associated progesterone receptor component 2 (PGRMC2), also known as DG6 or PMBP, belongs to the cytochrome b5 family. The gene of PGRMC2 maps to chromosome 4q26, and encodes a 223-amino acid single-pass membrane protein with a cytochrome b5 heme-binding domain in its cytoplasmic domain. PGRMC2 is highly homologous to PGRMC1. PGRMC2 might play a role in cancer.

Storage

Storage:
Store at -20°C. Stable for one year after shipment.

Storage Buffer:
PBS with 0.02% sodium azide and 50% glycerol pH 7.3.

Aliquoting is unnecessary for -20°C storage

For technical support and original validation data for this product please contact:

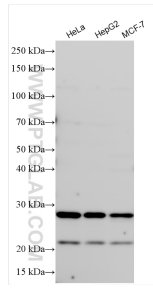
T: 4006900926

E: Proteintech-CN@ptglab.com

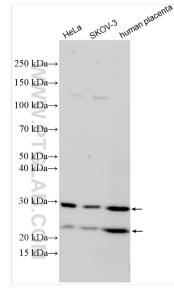
W: ptgcn.com

This product is exclusively available under Proteintech Group brand and is not available to purchase from any other manufacturer.

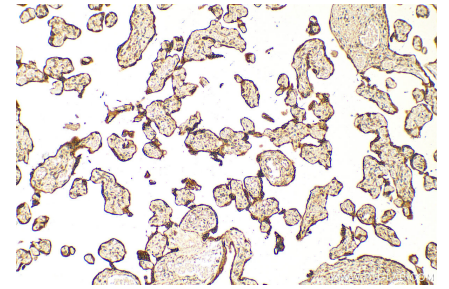
Selected Validation Data



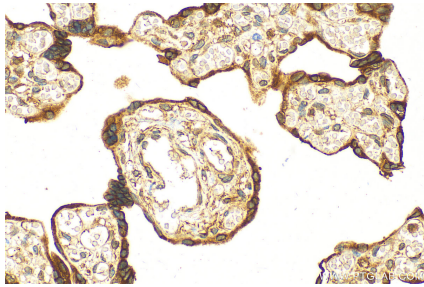
Various lysates were subjected to SDS PAGE followed by western blot with 24575-1-AP (PGRMC2 antibody) at dilution of 1:2000 incubated at room temperature for 1.5 hours.



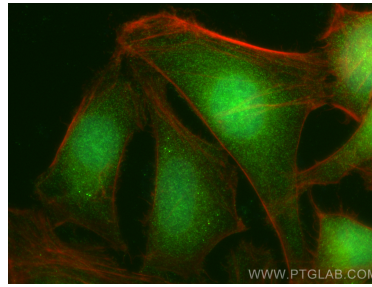
Various lysates were subjected to SDS PAGE followed by western blot with 24575-1-AP (PGRMC2 antibody) at dilution of 1:3000 incubated at room temperature for 1.5 hours.



Immunohistochemical analysis of paraffin-embedded human placenta tissue slide using 24575-1-AP (PGRMC2 antibody) at dilution of 1:200 (under 10x lens). Heat mediated antigen retrieval with Tris-EDTA buffer (pH 9.0).



Immunohistochemical analysis of paraffin-embedded human placenta tissue slide using 24575-1-AP (PGRMC2 antibody) at dilution of 1:200 (under 40x lens). Heat mediated antigen retrieval with Tris-EDTA buffer (pH 9.0).



Immunofluorescent analysis of (4% PFA) fixed HeLa cells using PGRMC2 antibody (24575-1-AP) at dilution of 1:200 and Multi-rAb CoraLite® Plus 488-Goat Anti-Rabbit Recombinant Secondary Antibody (H+L) (RGAR002), CL594-Phalloidin (red).