

For Research Use Only

CEP85L Polyclonal antibody, PBS Only

Catalog Number: 24588-1-PBS

Featured Product



Basic Information

Catalog Number:

24588-1-PBS

Size:

1 mg/ml

Source:

Rabbit

Isotype:

IgG

Immunogen Catalog Number:

AG20235

GenBank Accession Number:

BC153054

GeneID (NCBI):

387119

UNIPROT ID:

Q5SZL2

Full Name:

chromosome 6 open reading frame

204

Calculated MW:

805 aa, 92 kDa

Observed MW:

56 kDa

Purification Method:

Antigen affinity purification

Applications

Tested Applications:

WB, IHC, Indirect ELISA

Species Specificity:

human, mouse

Background Information

CEP85L, also named as C6orf204, is a gene which encodes a protein that has identified as a breast cancer antigen. Nothing more is known of its function at this time. There're five transcript variants with MW 45 kDa, 55-56 kDa and 91-92 kDa.

Storage

Storage:

Store at -80°C.

The product is shipped with ice packs. Upon receipt, store it immediately at -80°C

Storage Buffer:

PBS Only

For technical support and original validation data for this product please contact:

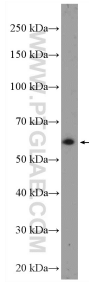
T: 4006900926

E: Proteintech-CN@ptglab.com

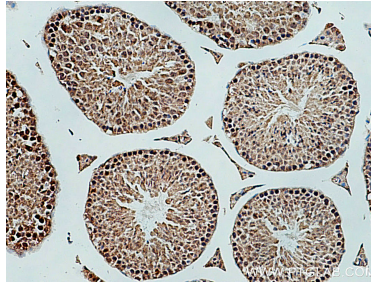
W: ptgcn.com

This product is exclusively available under Proteintech Group brand and is not available to purchase from any other manufacturer.

Selected Validation Data



PC-13 cells were subjected to SDS PAGE followed by western blot with 24588-1-AP (C6orf204 Antibody) at dilution of 1:600 incubated at room temperature for 1.5 hours. This data was developed using the same antibody clone with 24588-1-PBS in a different storage buffer formulation.



Immunohistochemical analysis of paraffin-embedded mouse testis tissue slide using 24588-1-AP (CEP85L antibody) at dilution of 1:200 (under 10x lens). Heat mediated antigen retrieval with Tris-EDTA buffer (pH 9.0). This data was developed using the same antibody clone with 24588-1-PBS in a different storage buffer formulation.