

For Research Use Only

FBXL4 Polyclonal antibody, PBS Only

Catalog Number: 24754-1-PBS



Basic Information

Catalog Number: 24754-1-PBS	GenBank Accession Number: BC055010	Purification Method: Antigen affinity purification
Size: 1 mg/ml	GeneID (NCBI): 26235	
Source: Rabbit	UNIPROT ID: Q9UKA2	
Isotype: IgG	Full Name: F-box and leucine-rich repeat protein	
Immunogen Catalog Number: AG21579	4	
	Calculated MW: 621 aa, 70 kDa	
	Observed MW: 70 kDa	

Applications

Tested Applications:
WB, IF/ICC, Indirect ELISA

Species Specificity:
human, mouse, rat

Background Information

FBXL4 (F-box and leucine-rich repeat protein 4) is a mitochondrial protein that has been recently found to play significant roles in mtDNA maintenance (PMID: 28940506). Moreover, FBXL4 is a substrate receptor of a Cullin-1-RING E3 (CRL1) ligase complex that has previously been shown to bind to SKP1, the common CRL1 adapter subunit (PMID: 37102372).

Storage

Storage:
Store at -80°C.
The product is shipped with ice packs. Upon receipt, store it immediately at -80°C

Storage Buffer:
PBS Only

For technical support and original validation data for this product please contact:

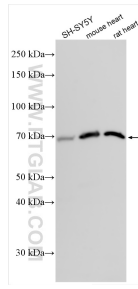
T: 4006900926

E: Proteintech-CN@ptglab.com

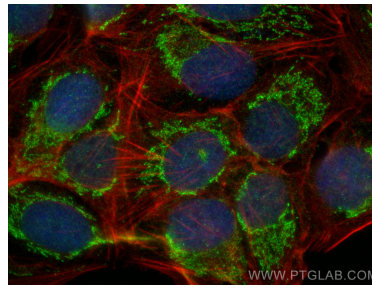
W: ptgcn.com

This product is exclusively available under Proteintech Group brand and is not available to purchase from any other manufacturer.

Selected Validation Data



Various lysates were subjected to SDS PAGE followed by western blot with 24754-1-AP (FBXL4 antibody) at dilution of 1:1000 incubated at room temperature for 1.5 hours. This data was developed using the same antibody clone with 24754-1-PBS in a different storage buffer formulation.



Immunofluorescent analysis of (4% PFA) fixed U2OS cells using FBXL4 antibody (24754-1-AP) at dilution of 1:400 and Multi-rAb CoraLite Plus 488-Goat Anti-Rabbit Recombinant Secondary Antibody (H+L) (RGAR002), CL594-phalloidin (red). This data was developed using the same antibody clone with 24754-1-PBS in a different storage buffer formulation.