

For Research Use Only

DMGDH Polyclonal antibody

Catalog Number: 24813-1-AP **3 Publications**



Basic Information

Catalog Number: 24813-1-AP	GenBank Accession Number: BC022388	Purification Method: Antigen affinity purification
Size: 600 ug/ml	GeneID (NCBI): 29958	Recommended Dilutions: WB 1:2000-1:12000 IHC 1:20-1:200 IF/ICC 1:50-1:500
Source: Rabbit	UNIPROT ID: Q9UI17	
Isotype: IgG	Full Name: dimethylglycine dehydrogenase	
Immunogen Catalog Number: AG20529	Calculated MW: 866 aa, 97 kDa	
	Observed MW: 97 kDa	

Applications

Tested Applications: WB, IHC, IF/ICC, FC (Intra), ELISA	Positive Controls: WB : mouse kidney tissue, mouse liver tissue, rat liver tissue, rat kidney tissue IHC : human liver cancer tissue, IF/ICC : HepG2 cells,
Cited Applications: WB, IHC, IF	
Species Specificity: human, mouse, rat	
Cited Species: human, mouse	
Note-IHC: suggested antigen retrieval with TE buffer pH 9.0; (*) Alternatively, antigen retrieval may be performed with citrate buffer pH 6.0	

Background Information

DMGDH(Dimethylglycine dehydrogenase, mitochondrial) is also named as ME2GLYDH and belongs to the GcvT family. It catalyzes the oxidative demethylation of dimethylglycine to form sarcosine and it plays a role in choline catabolism in the liver. The full length protein has a transit peptide.

Notable Publications

Author	Pubmed ID	Journal	Application
Yin Cao	30901224	J Proteome Res	WB
I-Ling Lu	29950674	Nat Commun	IF
Gang Liu	27119355	Oncotarget	WB,IHC

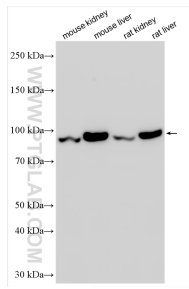
Storage

Storage:
Store at -20°C. Stable for one year after shipment.
Storage Buffer:
PBS with 0.02% sodium azide and 50% glycerol pH 7.3.
Aliquoting is unnecessary for -20°C storage

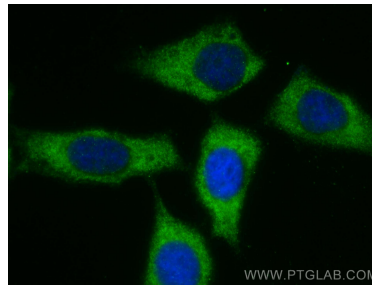
For technical support and original validation data for this product please contact:
T: 4006900926 E: Proteintech-CN@ptglab.com W: ptgcn.com

This product is exclusively available under Proteintech Group brand and is not available to purchase from any other manufacturer.

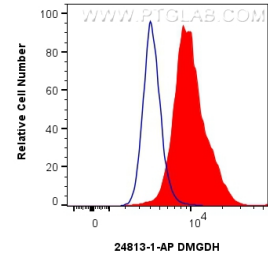
Selected Validation Data



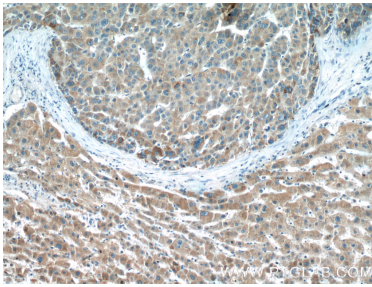
Various lysates were subjected to SDS PAGE followed by western blot with 24813-1-AP (DMGDH antibody) at dilution of 1:6000 incubated at room temperature for 1.5 hours.



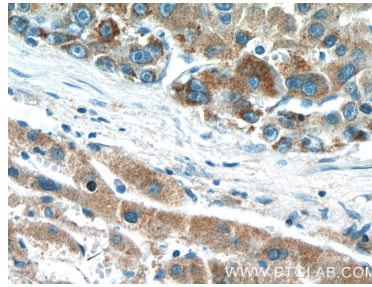
Immunofluorescent analysis of (-20°C Methanol) fixed HepG2 cells using DMGDH antibody (24813-1-AP) at dilution of 1:200 and CoraLite®488-Conjugated AffiniPure Goat Anti-Rabbit IgG(H+L).



1×10^6 HepG2 cells were intracellularly stained with 0.4 ug DMGDH Polyclonal antibody (24813-1-AP) and CoraLite®488-Conjugated Goat Anti-Rabbit IgG(H+L) (SA00013-2)(red), or 0.4 ug Rabbit IgG control Rabbit PolyAb (30000-0-AP) (blue). Cells were fixed with 4% PFA and permeabilized with Flow Cytometry Perm Buffer (PF00011-C).



Immunohistochemical analysis of paraffin-embedded human liver cancer tissue slide using 24813-1-AP (DMGDH Antibody) at dilution of 1:200 (under 10x lens).



Immunohistochemical analysis of paraffin-embedded human liver cancer tissue slide using 24813-1-AP (DMGDH Antibody) at dilution of 1:200 (under 40x lens).