

For Research Use Only

Calponin Polyclonal antibody, PBS Only

Catalog Number: 24855-1-PBS



Basic Information

Catalog Number:

24855-1-PBS

Size:

1 mg/ml

Source:

Rabbit

Isotype:

IgG

Immunogen Catalog Number:

AG21384

GenBank Accession Number:

BC022015

GeneID (NCBI):

1264

UNIPROT ID:

P51911

Full Name:

calponin 1, basic, smooth muscle

Calculated MW:

33 kDa

Observed MW:

34 kDa

Purification Method:

Antigen affinity purification

Applications

Tested Applications:

WB, IHC, IF/ICC, IF-P, Indirect ELISA

Species Specificity:

human, mouse

Background Information

Calponin is a family of actin filament-associated proteins which regulate smooth muscle cell contraction. Three isoforms of calponin exist: calponin h1 (CNN1), calponin h2 (CNN2) and calponin 3 (CNN3). CNN1 is a basic 34-kDa protein specifically expressed in smooth muscle and a marker of smooth muscle cell differentiation. This antibody raised against the specific region of human CNN1, thus it does not cross-react with CNN2 or CNN3.

Storage

Storage:

Store at -80°C.

The product is shipped with ice packs. Upon receipt, store it immediately at -80°C

Storage Buffer:

PBS Only

For technical support and original validation data for this product please contact:

T: 4006900926

E: Proteintech-CN@ptglab.com

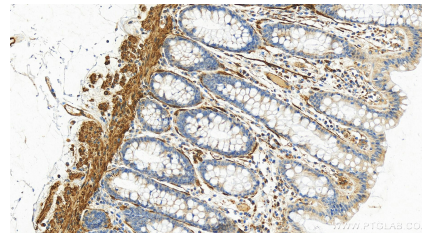
W: ptgcn.com

This product is exclusively available under Proteintech Group brand and is not available to purchase from any other manufacturer.

Selected Validation Data



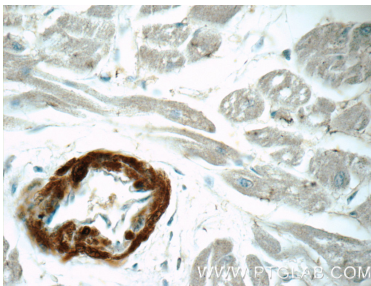
mouse stomach tissue were subjected to SDS PAGE followed by western blot with 24855-1-AP (Calponin Antibody) at dilution of 1:3000 incubated at room temperature for 1.5 hours. This data was developed using the same antibody clone with 24855-1-PBS in a different storage buffer formulation.



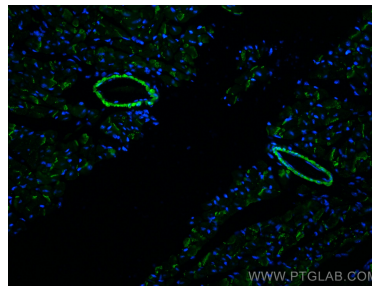
Immunohistochemical analysis of paraffin-embedded human normal colon slide using 24855-1-AP (Calponin antibody) at dilution of 1:600 (under 20x lens). Heat mediated antigen retrieval with Tris-EDTA buffer (pH 9.0). This data was developed using the same antibody clone with 24855-1-PBS in a different storage buffer formulation.



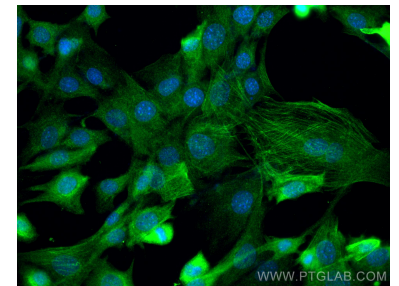
Immunohistochemical analysis of paraffin-embedded human heart tissue slide using 24855-1-AP (Calponin Antibody) at dilution of 1:50 (under 10x lens). This data was developed using the same antibody clone with 24855-1-PBS in a different storage buffer formulation.



Immunohistochemical analysis of paraffin-embedded human heart tissue slide using 24855-1-AP (Calponin Antibody) at dilution of 1:50 (under 40x lens). This data was developed using the same antibody clone with 24855-1-PBS in a different storage buffer formulation.



Immunofluorescent analysis of (4% PFA) fixed mouse heart tissue using Calponin antibody (24855-1-AP) at dilution of 1:200 and CoraLite®488-Conjugated AffiniPure Goat Anti-Rabbit IgG(H+L). This data was developed using the same antibody clone with 24855-1-PBS in a different storage buffer formulation.



Immunofluorescent analysis of (-20°C Methanol) fixed C2C12 cells using Calponin antibody (24855-1-AP) at dilution of 1:400 and CoraLite®488-Conjugated AffiniPure Goat Anti-Rabbit IgG(H+L). This data was developed using the same antibody clone with 24855-1-PBS in a different storage buffer formulation.