

For Research Use Only

# PRPF38A Polyclonal antibody

Catalog Number: 24946-1-AP



## Basic Information

<b>Catalog Number:</b> 24946-1-AP	<b>GenBank Accession Number:</b> BC000777	<b>Purification Method:</b> Antigen affinity purification
<b>Size:</b> 500 ug/ml	<b>GeneID (NCBI):</b> 84950	<b>Recommended Dilutions:</b> WB 1:200-1:1000 IF/ICC 1:20-1:200
<b>Source:</b> Rabbit	<b>UNIPROT ID:</b> Q8NAV1	
<b>Isotype:</b> IgG	<b>Full Name:</b> PRP38 pre-mRNA processing factor 38 (yeast) domain containing A	
<b>Immunogen Catalog Number:</b> AG20980	<b>Calculated MW:</b> 312 aa, 37 kDa	
	<b>Observed MW:</b> 37-40 kDa	

## Applications

<b>Tested Applications:</b> WB, IF/ICC, ELISA	<b>Positive Controls:</b> WB : K-562 cells, HepG2 cells
<b>Species Specificity:</b> human	<b>IF/ICC :</b> HepG2 cells,

## Background Information

PRPF38A was identified as an essential splicing factor in yeast and was found to be important for the progression of the splicing process to the first splicing step in this organism. PRPF38A is one of nine splicing factors that are specifically incorporated during the formation of the pre-catalytic spliceosomal B complex (B-specific proteins) and that are released again during spliceosome activation<sup>3</sup> (PMID: 35869234). PRPF38A knockdown led to widespread intronic retention and altered splicing of transcripts of genes implicated in protein metabolism, mitosis, proteasome function and apoptosis (PMID: 28878028).

## Storage

**Storage:**  
Store at -20°C. Stable for one year after shipment.  
**Storage Buffer:**  
PBS with 0.02% sodium azide and 50% glycerol pH 7.3.  
Aliquoting is unnecessary for -20°C storage

For technical support and original validation data for this product please contact:

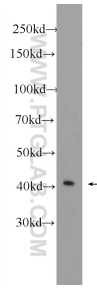
T: 4006900926

E: [Proteintech-CN@ptglab.com](mailto:Proteintech-CN@ptglab.com)

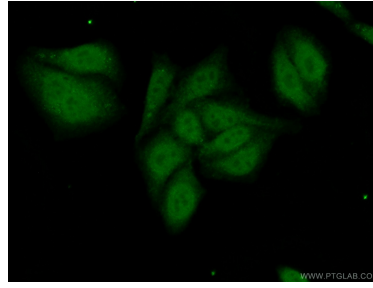
W: [ptgcn.com](http://ptgcn.com)

This product is exclusively available under Proteintech Group brand and is not available to purchase from any other manufacturer.

## Selected Validation Data



K-562 cells were subjected to SDS PAGE followed by western blot with 24946-1-AP (PRPF38A Antibody) at dilution of 1:300 incubated at room temperature for 1.5 hours.



Immunofluorescent analysis of (10% Formaldehyde) fixed HepG2 cells using 24946-1-AP (PRPF38A antibody) at dilution of 1:50 and Alexa Fluor 488-conjugated AffiniPure Goat Anti-Rabbit IgG(H+L).