

For Research Use Only

# NRDE2 Polyclonal antibody

Catalog Number: 24968-1-AP

Featured Product

5 Publications



## Basic Information

**Catalog Number:**

24968-1-AP

**Size:**

650 µg/ml

**Source:**

Rabbit

**Isotype:**

IgG

**Immunogen Catalog Number:**

AG21805

**GenBank Accession Number:**

BC118673

**GeneID (NCBI):**

55051

**UNIPROT ID:**

Q9H7Z3

**Full Name:**

chromosome 14 open reading frame  
102

**Calculated MW:**

1164 aa, 133 kDa

**Observed MW:**

133 kDa

**Purification Method:**

Antigen affinity purification

**Recommended Dilutions:**

WB 1:500-1:1000

IP 0.5-4.0 µg for 1.0-3.0 mg of total  
protein lysate

## Applications

**Tested Applications:**

IP, WB, ELISA

**Cited Applications:**

WB, IP, IHC, CoIP, ChIP

**Species Specificity:**

human

**Cited Species:**

human

**Positive Controls:**

WB : MCF-7 cells,

IP : MCF-7 cells,

## Background Information

### Notable Publications

Author	Pubmed ID	Journal	Application
Jianshu Wang	30842217	Genes Dev	WB,IP
Koichi Ogami	28733371	Genes Dev	WB,CoIP,IP
Julio C Ruiz	32376621	J Virol	WB

## Storage

**Storage:**

Store at -20°C. Stable for one year after shipment.

**Storage Buffer:**

PBS with 0.02% sodium azide and 50% glycerol pH 7.3.

Aliquoting is unnecessary for -20°C storage

For technical support and original validation data for this product please contact:

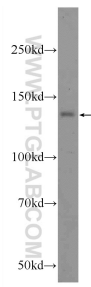
T: 4006900926

E: Proteintech-CN@ptglab.com

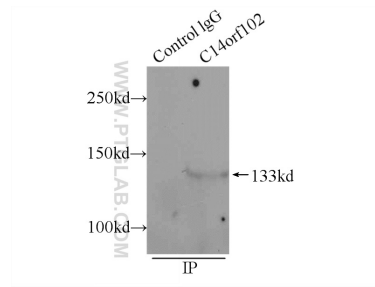
W: ptgcn.com

This product is exclusively available under Proteintech Group brand and is not available to purchase from any other manufacturer.

## Selected Validation Data



MCF-7 cells were subjected to SDS PAGE followed by western blot with 24968-1-AP (C14orf102 Antibody) at dilution of 1:600 incubated at room temperature for 1.5 hours.



IP result of anti-NRDE2 (IP:24968-1-AP, 5ug; Detection:24968-1-AP 1:500) with MCF-7 cells lysate 1200ug.