

For Research Use Only

ZIC1 Polyclonal antibody

Catalog Number: 25004-1-AP



Basic Information

Catalog Number:

25004-1-AP

Size:

500 µg/ml

Source:

Rabbit

Isotype:

IgG

Immunogen Catalog Number:

AG13400

GenBank Accession Number:

BC104848

GeneID (NCBI):

7545

UNIPROT ID:

Q15915

Full Name:

Zic family member 1 (odd-paired homolog, Drosophila)

Calculated MW:

447 aa, 48 kDa

Observed MW:

~50 kDa

Purification Method:

Antigen affinity purification

Recommended Dilutions:

WB 1:2000-1:10000

Applications

Tested Applications:

WB, ELISA

Species Specificity:

human, rat

Positive Controls:

WB : ROS1728 cells, Y79 cells, PC-12 cells

Background Information

ZIC1 is a member of the Zinc finger of the cerebellum (ZIC) protein family. In vertebrates, the ZIC gene family plays an important role in neural crest and subsequent cerebellar development. Mutations in ZIC family members have demonstrated that they are essential for proper development of the neural tube, left-right symmetry, and muscle and skeletal development. It has been reported that ZIC1 participates in the regulation of cell proliferation in the dorsal neural tube by inhibition of neural differentiation. Furthermore, ZIC1 is potentially involved in the oncogenesis of undifferentiated nervous system tumors. (PMID:17936758)

Storage

Storage:

Store at -20°C. Stable for one year after shipment.

Storage Buffer:

PBS with 0.02% sodium azide and 50% glycerol pH 7.3.

Aliquoting is unnecessary for -20°C storage

For technical support and original validation data for this product please contact:

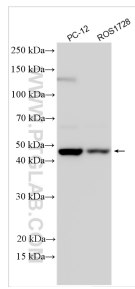
T: 4006900926

E: Proteintech-CN@ptglab.com

W: ptgcn.com

This product is exclusively available under Proteintech Group brand and is not available to purchase from any other manufacturer.

Selected Validation Data



Various lysates were subjected to SDS PAGE followed by western blot with 25004-1-AP (ZIC1 antibody) at dilution of 1:5000 incubated at room temperature for 1.5 hours.