

For Research Use Only

NAS1/SLC13A1 Polyclonal antibody

Catalog Number: 25039-1-AP



Basic Information

Catalog Number:

25039-1-AP

Size:

550 µg/ml

Source:

Rabbit

Isotype:

IgG

Immunogen Catalog Number:

AG19026

GenBank Accession Number:

BC148686

GeneID (NCBI):

6561

UNIPROT ID:

Q9BZW2

Full Name:

solute carrier family 13
(sodium/sulfate symporters), member
1

Calculated MW:

595 aa, 66 kDa

Observed MW:

66 kDa

Purification Method:

Antigen affinity purification

Recommended Dilutions:

WB 1:500-1:2000

IF-P 1:50-1:500

Applications

Tested Applications:

WB, IF-P, ELISA

Species Specificity:

human, mouse

Positive Controls:

WB: HEK-293 cells, mouse kidney tissue

IF-P: mouse kidney tissue,

Background Information

SLC13A1 also known as NAS1, is an apical membrane Na⁺-sulfate cotransporter involved in sulfate homeostasis in the kidney. SLC13A1 primarily participates in pH-independent, sodium-dependent cotransport of sulfate across renal proximal tubules and small intestinal epithelia (PMID: 38552027).

Storage

Storage:

Store at -20°C. Stable for one year after shipment.

Storage Buffer:

PBS with 0.02% sodium azide and 50% glycerol pH 7.3.

Aliquoting is unnecessary for -20°C storage

For technical support and original validation data for this product please contact:

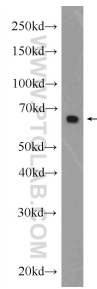
T: 4006900926

E: Proteintech-CN@ptglab.com

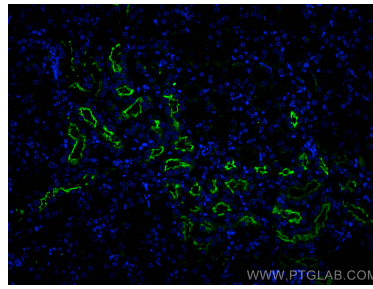
W: ptgcn.com

This product is exclusively available under Proteintech Group brand and is not available to purchase from any other manufacturer.

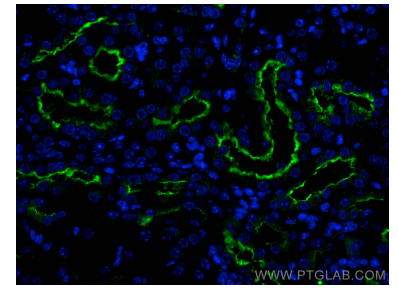
Selected Validation Data



HEK-293 cells were subjected to SDS PAGE followed by western blot with 25039-1-AP (NAS1/SLC13A1 antibody at dilution of 1:1000) incubated at room temperature for 1.5 hours.



Immunofluorescent analysis of (4% PFA) fixed paraffin-embedded mouse kidney tissue using NAS1/SLC13A1 antibody (25039-1-AP) at dilution of 1:200 and CoraLite®488-Conjugated AffiniPure Goat Anti-Rabbit IgG(H+L) (SA00013-2). Heat mediated antigen retrieval with Tris-EDTA buffer (pH 9.0).



Immunofluorescent analysis of (4% PFA) fixed paraffin-embedded mouse kidney tissue using NAS1/SLC13A1 antibody (25039-1-AP) at dilution of 1:200 and CoraLite®488-Conjugated AffiniPure Goat Anti-Rabbit IgG(H+L) (SA00013-2). Heat mediated antigen retrieval with Tris-EDTA buffer (pH 9.0).