

For Research Use Only

# NHE2 Polyclonal antibody

Catalog Number: 25105-1-AP



## Basic Information

**Catalog Number:**

25105-1-AP

**Size:**

600 µg/ml

**Source:**

Rabbit

**Isotype:**

IgG

**Immunogen Catalog Number:**

AG18801

**GenBank Accession Number:**

BC136377

**GeneID (NCBI):**

6549

**UNIPROT ID:**

Q9UBYO

**Full Name:**

solute carrier family 9  
(sodium/hydrogen exchanger),  
member 2

**Calculated MW:**

812 aa, 92 kDa

**Observed MW:**

70 kDa

**Purification Method:**

Antigen affinity purification

**Recommended Dilutions:**

WB 1:5000-1:50000

## Applications

**Tested Applications:**

WB, ELISA

**Species Specificity:**

human, mouse, rat

**Positive Controls:**

WB : HEK-293 cells, rat brain tissue, mouse stomach tissue

## Background Information

NHE2, also known as SLC9A2, is a protein-coding gene mainly at the top of gastrointestinal epithelial cells. It mainly encodes a member of the sodium-hydrogen exchanger (NHE) protein family, which is localized to the apical membrane and is easily degraded by lysosomes, resulting in a short half-life. NHE2 is involved in sodium ion transport by exchanging intracellular hydrogen ions into external sodium ions, and helps in the regulation of cell pH and volume to eliminate acids produced by active metabolism or against adverse environmental conditions. NHE2 is widely distributed in tissues of the gastrointestinal tract, kidney, heart, testes, uterus, and adrenal glands (PMID: 37688782). The observed molecular weight of NHE2 is 70 kDa, which might be the unmodified form of NHE2 (PMID: 10444453, 10666043).

## Storage

**Storage:**

Store at -20°C. Stable for one year after shipment.

**Storage Buffer:**

PBS with 0.02% sodium azide and 50% glycerol pH 7.3.

Aliquoting is unnecessary for -20°C storage

For technical support and original validation data for this product please contact:

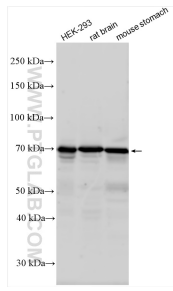
T: 4006900926

E: [Proteintech-CN@ptglab.com](mailto:Proteintech-CN@ptglab.com)

W: [ptgcn.com](http://ptgcn.com)

**This product is exclusively available under Proteintech Group brand and is not available to purchase from any other manufacturer.**

## Selected Validation Data



Various lysates were subjected to SDS PAGE followed by western blot with 25105-1-AP (NHE2 antibody) at dilution of 1:20000 incubated at room temperature for 1.5 hours.