

For Research Use Only

# TPTE2 Polyclonal antibody

Catalog Number: 25120-1-AP



## Basic Information

Catalog Number:

25120-1-AP

Size:

550 µg/ml

Source:

Rabbit

Isotype:

IgG

Immunogen Catalog Number:

AG19169

GenBank Accession Number:

BC128146

GeneID (NCBI):

93492

UNIPROT ID:

Q6XP53

Full Name:

transmembrane phosphoinositide 3-phosphatase and tensin homolog 2

Calculated MW:

522 aa, 61 kDa

Observed MW:

38-60 kDa

Purification Method:

Antigen affinity purification

Recommended Dilutions:

WB 1:200-1:1000

IHC 1:100-1:400

IF/ICC 1:20-1:200

## Applications

Tested Applications:

IF/ICC, IHC, WB, ELISA

Species Specificity:

human

**Note-IHC: suggested antigen retrieval with TE buffer pH 9.0; (\*) Alternatively, antigen retrieval may be performed with citrate buffer pH 6.0**

Positive Controls:

WB : L02 cells,

IHC : human liver cancer tissue,

IF/ICC : L02 cells,

## Background Information

### Storage

Storage:

Store at -20°C. Stable for one year after shipment.

Storage Buffer:

PBS with 0.02% sodium azide and 50% glycerol pH 7.3.

Aliquoting is unnecessary for -20°C storage

For technical support and original validation data for this product please contact:

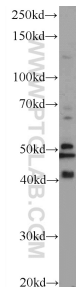
T: 4006900926

E: [Proteintech-CN@ptglab.com](mailto:Proteintech-CN@ptglab.com)

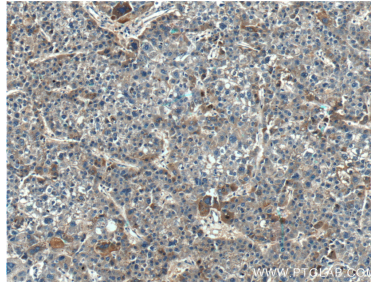
W: [ptgcn.com](http://ptgcn.com)

**This product is exclusively available under Proteintech Group brand and is not available to purchase from any other manufacturer.**

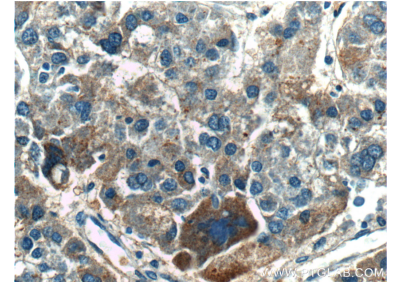
## Selected Validation Data



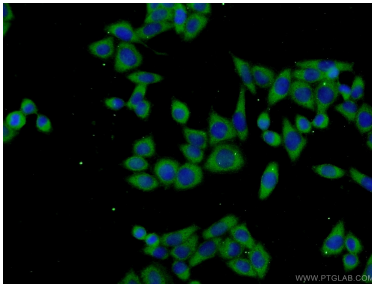
L02 cells were subjected to SDS PAGE followed by western blot with 25120-1-AP (TPTE2 Antibody) at dilution of 1:300 incubated at 4 degree celsius over night.



Immunohistochemical analysis of paraffin-embedded human liver cancer tissue slide using 25120-1-AP (TPTE2 Antibody) at dilution of 1:200 (under 10x lens).



Immunohistochemical analysis of paraffin-embedded human liver cancer tissue slide using 25120-1-AP (TPTE2 Antibody) at dilution of 1:200 (under 40x lens).



Immunofluorescent analysis of L02 cells using 25120-1-AP (TPTE2 antibody) at dilution of 1:50 and Alexa Fluor 488-conjugated AffiniPure Goat Anti-Rabbit IgG(H+L).