

For Research Use Only

# CCDC12 Polyclonal antibody

Catalog Number: 25138-1-AP



## Basic Information

<b>Catalog Number:</b> 25138-1-AP	<b>GenBank Accession Number:</b> BC020830	<b>Purification Method:</b> Antigen affinity purification
<b>Size:</b> 700 µg/ml	<b>GeneID (NCBI):</b> 151903	<b>Recommended Dilutions:</b> WB 1:500-1:1000
<b>Source:</b> Rabbit	<b>UNIPROT ID:</b> Q8WUD4	IP 0.5-4.0 µg for 1.0-3.0 mg of total protein lysate
<b>Isotype:</b> IgG	<b>Full Name:</b> coiled-coil domain containing 12	IHC 1:500-1:2000
<b>Immunogen Catalog Number:</b> AG18223	<b>Calculated MW:</b> 166 aa, 19 kDa	IF/ICC 1:50-1:500
	<b>Observed MW:</b> 18-25 kDa	

## Applications

<b>Tested Applications:</b> WB, IP, IF/ICC, IHC, ELISA	<b>Positive Controls:</b>
<b>Species Specificity:</b> human	WB : HeLa cells, Raji cells
<b>Note-IHC: suggested antigen retrieval with TE buffer pH 9.0; (*) Alternatively, antigen retrieval may be performed with citrate buffer pH 6.0</b>	IP : HeLa cells,
	IHC : human ovary tumor tissue,
	IF/ICC : HeLa cells,

## Background Information

CCDC12 is a 166aa protein with MW 18-25 kDa (with some modification).

## Storage

**Storage:**  
Store at -20°C. Stable for one year after shipment.  
**Storage Buffer:**  
PBS with 0.02% sodium azide and 50% glycerol pH 7.3.  
Aliquoting is unnecessary for -20°C storage

For technical support and original validation data for this product please contact:

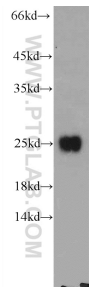
T: 4006900926

E: Proteintech-CN@ptglab.com

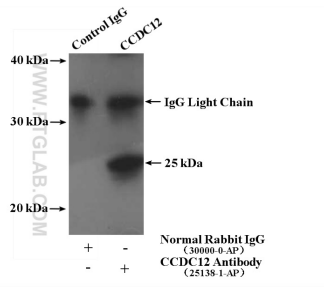
W: ptgcn.com

This product is exclusively available under Proteintech Group brand and is not available to purchase from any other manufacturer.

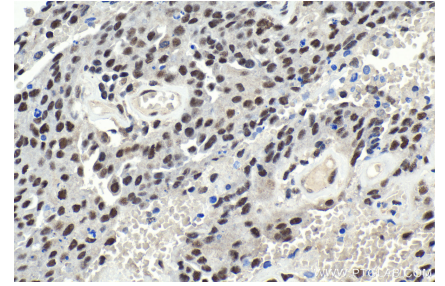
## Selected Validation Data



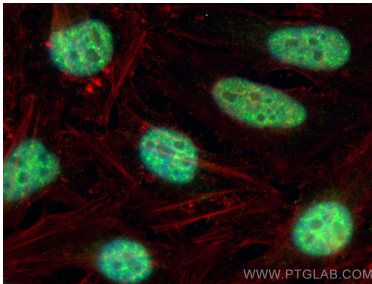
HeLa cells were subjected to SDS PAGE followed by western blot with 25138-1-AP (CCDC12 Antibody) at dilution of 1:600 incubated at room temperature for 1.5 hours.



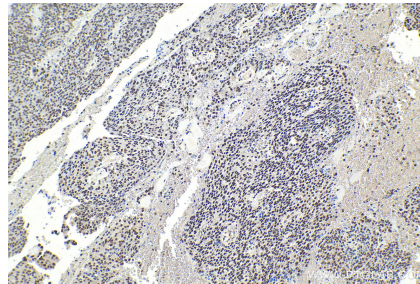
IP result of anti-CCDC12 (IP:25138-1-AP, 4ug; Detection:25138-1-AP 1:600) with HeLa cells lysate 2560ug.



Immunohistochemical analysis of paraffin-embedded human ovary tumor tissue slide using 25138-1-AP (CCDC12 antibody) at dilution of 1:1000 (under 40x lens). Heat mediated antigen retrieval with Tris-EDTA buffer (pH 9.0).



Immunofluorescent analysis of (4% PFA) fixed HeLa cells using CCDC12 antibody (25138-1-AP) at dilution of 1:200 and Coralite@488-Conjugated AffiniPure Goat Anti-Rabbit IgG(H+L) (SA00013-2), CL594-phalloidin (red).



Immunohistochemical analysis of paraffin-embedded human ovary tumor tissue slide using 25138-1-AP (CCDC12 antibody) at dilution of 1:1000 (under 10x lens). Heat mediated antigen retrieval with Tris-EDTA buffer (pH 9.0).