

For Research Use Only

# Syncoilin Polyclonal antibody

Catalog Number: 25151-1-AP 1 Publications



## Basic Information

**Catalog Number:**

25151-1-AP

**Size:**

1100 µg/ml

**Source:**

Rabbit

**Isotype:**

IgG

**Immunogen Catalog Number:**

AG18565

**GenBank Accession Number:**

BC119700

**GeneID (NCBI):**

81493

**UNIPROT ID:**

Q9H7C4

**Full Name:**

syncoilin, intermediate filament protein

**Calculated MW:**

482 aa, 55 kDa

**Observed MW:**

64-68 kDa, 55 kDa

**Purification Method:**

Antigen affinity purification

**Recommended Dilutions:**

WB 1:2000-1:10000

IP 0.5-4.0 µg for 1.0-3.0 mg of total protein lysate

IHC 1:50-1:500

## Applications

**Tested Applications:**

IHC, IP, WB, ELISA

**Cited Applications:**

IF

**Species Specificity:**

human, mouse

**Cited Species:**

mouse

**Note-IHC: suggested antigen retrieval with TE buffer pH 9.0; (\*) Alternatively, antigen retrieval may be performed with citrate buffer pH 6.0**

**Positive Controls:**

WB : mouse heart tissue,

IP : mouse heart tissue,

IHC : mouse heart tissue, human heart tissue, mouse skeletal muscle tissue, human skeletal muscle tissue

## Background Information

### Notable Publications

Author	Pubmed ID	Journal	Application
Maria Angels Rodríguez	30347079	Invest Ophthalmol Vis Sci	IF

## Storage

**Storage:**

Store at -20°C. Stable for one year after shipment.

**Storage Buffer:**

PBS with 0.02% sodium azide and 50% glycerol pH 7.3.

Aliquoting is unnecessary for -20°C storage

For technical support and original validation data for this product please contact:

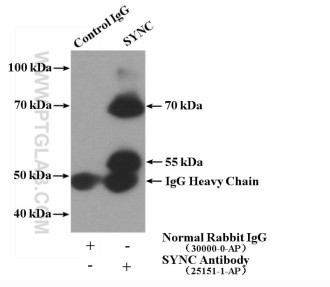
T: 4006900926

E: Proteintech-CN@ptglab.com

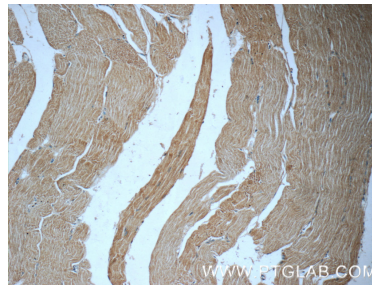
W: ptgcn.com

**This product is exclusively available under Proteintech Group brand and is not available to purchase from any other manufacturer.**

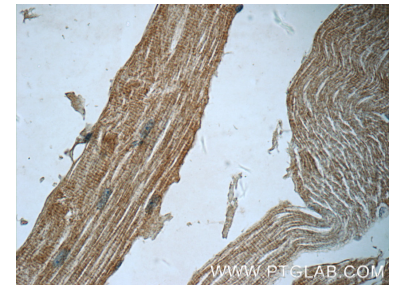
## Selected Validation Data



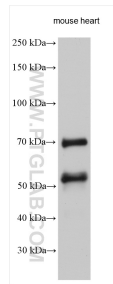
IP result of anti-Syncoilin (IP:25151-1-AP, 4ug; Detection:25151-1-AP 1:800) with mouse heart tissue lysate 4000ug.



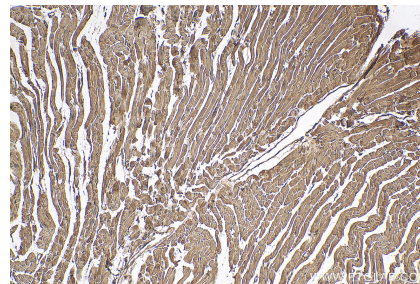
Immunohistochemical analysis of paraffin-embedded human skeletal muscle tissue slide using 25151-1-AP (SYNC Antibody) at dilution of 1:50 (under 10x lens).



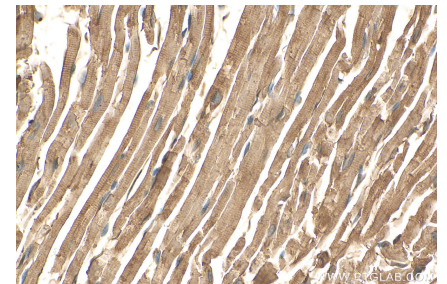
Immunohistochemical analysis of paraffin-embedded human skeletal muscle tissue slide using 25151-1-AP (SYNC Antibody) at dilution of 1:50 (under 40x lens).



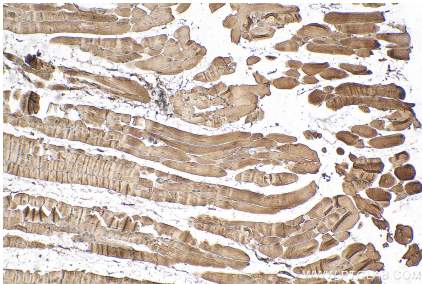
mouse heart tissue were subjected to SDS PAGE followed by western blot with 25151-1-AP (Syncoilin antibody) at dilution of 1:5000 incubated at room temperature for 1.5 hours.



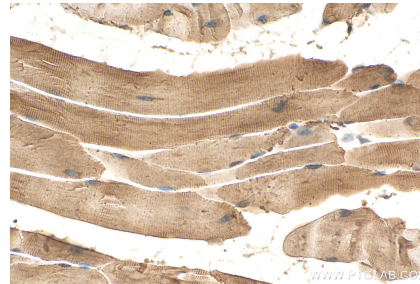
Immunohistochemical analysis of paraffin-embedded mouse heart tissue slide using 25151-1-AP (Syncoilin antibody) at dilution of 1:200 (under 10x lens). Heat mediated antigen retrieval with Tris-EDTA buffer (pH 9.0).



Immunohistochemical analysis of paraffin-embedded mouse heart tissue slide using 25151-1-AP (Syncoilin antibody) at dilution of 1:200 (under 40x lens). Heat mediated antigen retrieval with Tris-EDTA buffer (pH 9.0).



Immunohistochemical analysis of paraffin-embedded mouse skeletal muscle tissue slide using 25151-1-AP (Syncoilin antibody) at dilution of 1:200 (under 10x lens). Heat mediated antigen retrieval with Tris-EDTA buffer (pH 9.0).



Immunohistochemical analysis of paraffin-embedded mouse skeletal muscle tissue slide using 25151-1-AP (Syncoilin antibody) at dilution of 1:200 (under 40x lens). Heat mediated antigen retrieval with Tris-EDTA buffer (pH 9.0).