

For Research Use Only

# ALDH1A3 Polyclonal antibody

Catalog Number: 25167-1-AP

Featured Product

16 Publications



## Basic Information

Catalog Number:

25167-1-AP

Size:

600 µg/ml

Source:

Rabbit

Isotype:

IgG

Immunogen Catalog Number:

AG18605

GenBank Accession Number:

BC069274

GeneID (NCBI):

220

UNIPROT ID:

P47895

Full Name:

aldehyde dehydrogenase 1 family, member A3

Calculated MW:

512 aa, 56 kDa

Observed MW:

50 kDa

Purification Method:

Antigen affinity purification

Recommended Dilutions:

WB 1:500-1:2000

IHC 1:50-1:500

IF 1:20-1:200

## Applications

Tested Applications:

IF/ICC, IHC, WB, ELISA

Cited Applications:

WB, IF, IHC

Species Specificity:

human, mouse, rat

Cited Species:

human, goat, mouse

**Note-IHC: suggested antigen retrieval with TE buffer pH 9.0; (\*) Alternatively, antigen retrieval may be performed with citrate buffer pH 6.0**

Positive Controls:

WB : HepG2 cells, mouse liver tissue, rat liver tissue

IHC : human liver tissue,

IF : HepG2 cells,

## Background Information

Aldehyde dehydrogenase 1 family member A3 (ALDH1A3), is an aldehyde dehydrogenase enzyme that uses retinal as a substrate either in a free or a cellular retinol-binding protein form. ALDH1A3 plays a major role in the detoxification of aldehydes generated by alcohol metabolism and lipid peroxidation. ALDH1A3 is calculated to be 56 kDa.

## Notable Publications

Author	Pubmed ID	Journal	Application
Changmei Yang	34506903	Free Radic Biol Med	WB
Xingxing Xu	29076503	Cell Res	WB
Shoma Tamori	30559934	Oncotarget	WB

## Storage

Storage:

Store at -20°C. Stable for one year after shipment.

Storage Buffer:

PBS with 0.02% sodium azide and 50% glycerol pH 7.3.

Aliquoting is unnecessary for -20°C storage

For technical support and original validation data for this product please contact:

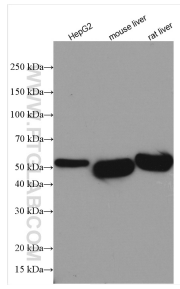
T: 4006900926

E: Proteintech-CN@ptglab.com

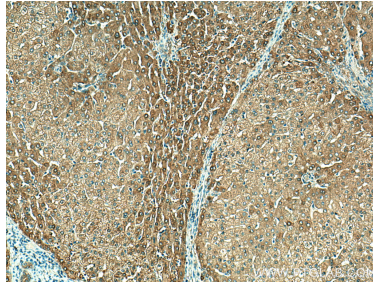
W: ptgcn.com

This product is exclusively available under Proteintech Group brand and is not available to purchase from any other manufacturer.

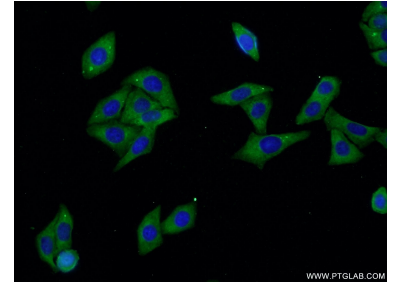
## Selected Validation Data



Various lysates were subjected to SDS PAGE followed by western blot with 25167-1-AP (ALDH1A3 antibody) at dilution of 1:1000 incubated at room temperature for 1.5 hours.



Immunohistochemical analysis of paraffin-embedded human liver tissue slide using 25167-1-AP (ALDH1A3 antibody) at dilution of 1:200 (under 10x lens). Heat mediated antigen retrieval with Tris-EDTA buffer (pH 9.0).



Immunofluorescent analysis of HepG2 cells using 25167-1-AP (ALDH1A3 antibody) at dilution of 1:50 and Alexa Fluor 488-conjugated AffiniPure Goat Anti-Rabbit IgG(H+L).