

For Research Use Only

C8B Polyclonal antibody

Catalog Number: 25184-1-AP



Basic Information

Catalog Number: 25184-1-AP	GenBank Accession Number: BC130575	Purification Method: Antigen affinity purification
Size: 750 µg/ml	GeneID (NCBI): 732	Recommended Dilutions: WB 1:1000-1:8000
Source: Rabbit	UNIPROT ID: P07358	
Isotype: IgG	Full Name: complement component 8, beta polypeptide	
Immunogen Catalog Number: AG18388	Calculated MW: 591 aa, 67 kDa	
	Observed MW: 64 kDa	

Applications

Tested Applications: WB, ELISA	Positive Controls: WB : human plasma,
Species Specificity: human	

Background Information

The beta chain of complement component 8 (C8B) is one of three different subunits (alpha, beta, and gamma) of the complement component 8 (C8), which is a component of the MAC (membrane attack complex). The deficiency of C8B leads to the type II of C8 deficiency, leading to the malfunction of MAC.

Storage

Storage:
Store at -20°C. Stable for one year after shipment.
Storage Buffer:
PBS with 0.02% sodium azide and 50% glycerol pH 7.3.
Aliquoting is unnecessary for -20°C storage

For technical support and original validation data for this product please contact:

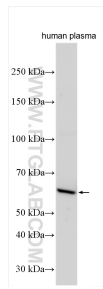
T: 4006900926

E: Proteintech-CN@ptglab.com

W: ptgcn.com

This product is exclusively available under Proteintech Group brand and is not available to purchase from any other manufacturer.

Selected Validation Data



human plasma was subjected to SDS PAGE followed by western blot with 25184-1-AP (C8B antibody) at dilution of 1:4000 incubated at room temperature for 1.5 hours.