

For Research Use Only

SLC25A22 Polyclonal antibody

Catalog Number: 25402-1-AP **1 Publications**



Basic Information

Catalog Number: 25402-1-AP	GenBank Accession Number: BC023545	Purification Method: Antigen affinity purification
Size: 1000 µg/ml	GeneID (NCBI): 79751	Recommended Dilutions: WB 1:1000-1:6000 IHC 1:50-1:500 IF-P 1:50-1:500 IF/ICC 1:50-1:500
Source: Rabbit	UNIPROT ID: Q9H936	
Isotype: IgG	Full Name: solute carrier family 25 (mitochondrial carrier: glutamate), member 22	
Immunogen Catalog Number: AG19958	Calculated MW: 323 aa, 34 kDa	
	Observed MW: 30-34 kDa	

Applications

Tested Applications: WB, IHC, IF/ICC, IF-P, ELISA	Positive Controls: WB : mouse brain tissue, Caco-2 cells, HT-29 cells, rat brain tissue, NCI-H1299 cells
Cited Applications: WB	IHC : mouse brain tissue, human colon cancer tissue, human liver cancer tissue
Species Specificity: human, mouse, rat, monkey	IF-P : mouse brain tissue,
Cited Species: mouse	IF/ICC : COS-7 cells,
Note-IHC: suggested antigen retrieval with TE buffer pH 9.0; (*) Alternatively, antigen retrieval may be performed with citrate buffer pH 6.0	

Background Information

SLC25A22 encodes a mitochondrial glutamate/H⁺ symporter with highly expression in brain, especially in astrocytes, where it controls glutamate uptake. The mutations of SLC25A22 are associated with the early/infantile epileptic encephalopathies. It has been shown that SLC25A22 plays a key role in promoting proliferation and migration in cancer, such as human colorectal cancer (CRC) and Gallbladder cancer (GBC). And there is a result that the expression of SLC25A22 in GBC was significantly higher than that in adjacent tissues. 25402-1-AP antibody is specific to SLC25A22.(PMID: 30814911, 25033742, 24596948)

Notable Publications

Author	Pubmed ID	Journal	Application
Maria F Noterman	33836587	Proc Natl Acad Sci U S A	WB

Storage

Storage:
Store at -20°C. Stable for one year after shipment.
Storage Buffer:
PBS with 0.02% sodium azide and 50% glycerol pH 7.3.
Aliquoting is unnecessary for -20°C storage

For technical support and original validation data for this product please contact:

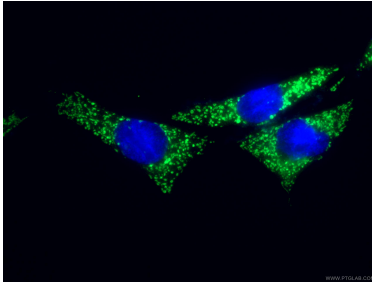
T: 4006900926

E: Proteintech-CN@ptglab.com

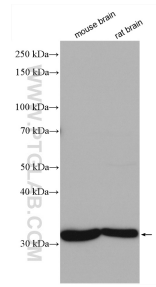
W: ptgcn.com

This product is exclusively available under Proteintech Group brand and is not available to purchase from any other manufacturer.

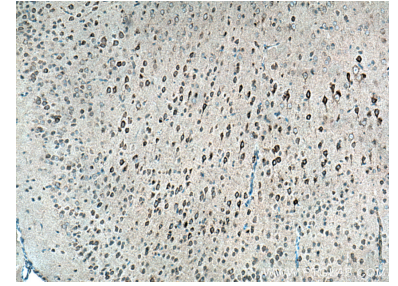
Selected Validation Data



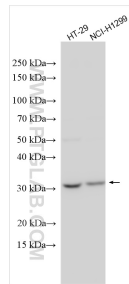
Immunofluorescent analysis of (4% PFA) fixed COS-7 cells using 25402-1-AP (SLC25A22 antibody), at dilution of 1:200 and CoraLite® 488-Conjugated AffiniPure Goat Anti-Rabbit IgG(H+L).



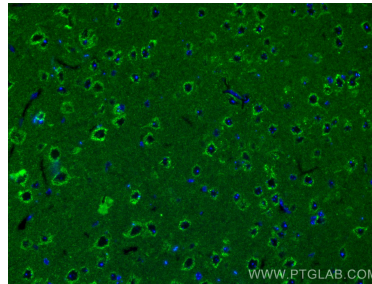
Various lysates were subjected to SDS PAGE followed by western blot with 25402-1-AP (SLC25A22 antibody) at dilution of 1:3000 incubated at room temperature for 1.5 hours.



Immunohistochemical analysis of paraffin-embedded mouse brain tissue slide using 25402-1-AP (SLC25A22 antibody) at dilution of 1:200 (under 10x lens). Heat mediated antigen retrieval with Tris-EDTA buffer (pH 9.0).



Various lysates were subjected to SDS PAGE followed by western blot with 25402-1-AP (SLC25A22 antibody) at dilution of 1:5000 incubated at room temperature for 1.5 hours.



Immunofluorescent analysis of (4% PFA) fixed mouse brain tissue using SLC25A22 antibody (25402-1-AP) at dilution of 1:200 and CoraLite® 488-Conjugated AffiniPure Goat Anti-Rabbit IgG(H+L).