

For Research Use Only

TSC22D2 Polyclonal antibody

Catalog Number: 25418-1-AP **1 Publications**



Basic Information

Catalog Number:

25418-1-AP

Size:

600 µg/ml

Source:

Rabbit

Isotype:

IgG

Immunogen Catalog Number:

AG22294

GenBank Accession Number:

BC044643

GeneID (NCBI):

9819

UNIPROT ID:

O75157

Full Name:

TSC22 domain family, member 2

Calculated MW:

780 aa, 79 kDa

Observed MW:

100-110 kDa

Purification Method:

Antigen affinity purification

Recommended Dilutions:

WB 1:2000-1:16000

IP 0.5-4.0 µg for 1.0-3.0 mg of total protein lysate

IHC 1:20-1:200

IF/ICC 1:20-1:200

Applications

Tested Applications:

WB, IHC, IF/ICC, IP, ELISA

Cited Applications:

WB, IHC

Species Specificity:

human

Cited Species:

human

Note-IHC: suggested antigen retrieval with TE buffer pH 9.0; (*) Alternatively, antigen retrieval may be performed with citrate buffer pH 6.0

Positive Controls:

WB: HEK-293 cells, MDA-MB-453s cells, HepG2 cells, SH-SY5Y cells

IP: HepG2 cells,

IHC: human kidney tissue, human colon tissue

IF/ICC: HepG2 cells,

Background Information

TSC22D2 (transforming growth factor β -stimulated clone 22 domain family, member 2) is a member of the TSC-22 domain family comprising putative transcription factors that are characterized by a carboxy-terminal leucine zipper and an adjacent TSC-box. TSC22D2 is expressed at low levels in CRC and that TSC22D2 overexpression significantly inhibited the growth rate of cancer cells (PMID: 27573352).

Notable Publications

Author	Pubmed ID	Journal	Application
Qixian Liu	36894917	BMC Cancer	WB,IHC

Storage

Storage:

Store at -20°C. Stable for one year after shipment.

Storage Buffer:

PBS with 0.02% sodium azide and 50% glycerol pH 7.3.

Aliquoting is unnecessary for -20°C storage

For technical support and original validation data for this product please contact:

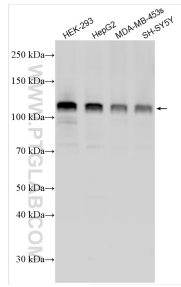
T: 4006900926

E: Proteintech-CN@ptglab.com

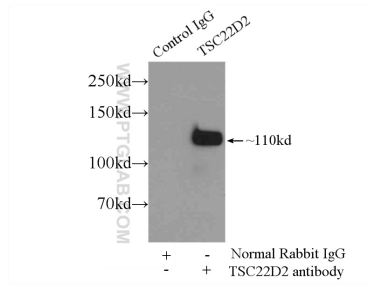
W: ptgcn.com

This product is exclusively available under Proteintech Group brand and is not available to purchase from any other manufacturer.

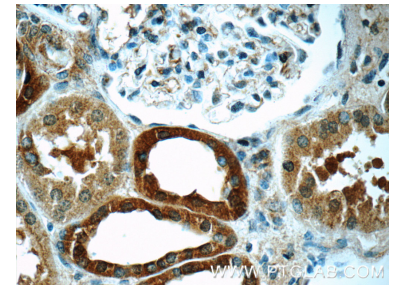
Selected Validation Data



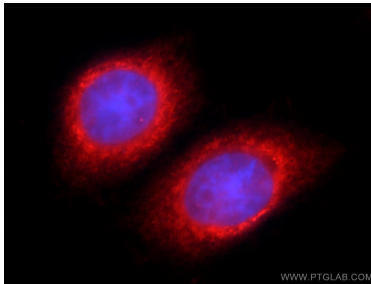
Various lysates were subjected to SDS PAGE followed by western blot with 25418-1-AP (TSC22D2 antibody) at dilution of 1:8000 incubated at room temperature for 1.5 hours.



IP result of anti-TSC22D2 (IP:25418-1-AP, 5ug; Detection:25418-1-AP 1:300) with HepG2 cells lysate 2500ug.



Immunohistochemical analysis of paraffin-embedded human kidney tissue slide using 25418-1-AP (TSC22D2 Antibody) at dilution of 1:50 (under 40x lens).



Immunofluorescent analysis of HepG2 cells using 25418-1-AP (TSC22D2 antibody) at dilution of 1:50 and Rhodamine-Goat anti-Rabbit IgG.