

KREMEN1 Polyclonal antibody

Catalog Number: 25434-1-AP

Basic Information

Catalog Number:

25434-1-AP

Size:

500 µg/ml

Source:

Rabbit

Isotype:

IgG

Immunogen Catalog Number:

AG22092

GenBank Accession Number:

BC063787

GeneID (NCBI):

83999

UNIPROT ID:

Q96MU8

Full Name:

kringle containing transmembrane protein 1

Calculated MW:

473 aa, 52 kDa

Observed MW:

50 kDa

Purification Method:

Antigen affinity purification

Recommended Dilutions:

WB 1:1000-1:6000

Applications

Tested Applications:

WB, ELISA

Species Specificity:

human, mouse, rat

Positive Controls:

WB : mouse liver tissue, rat liver tissue

Background Information

Kringle containing transmembrane protein 1 (KREMEN1, also known as KRM1, ECTD13, and KREMEN) is a transmembrane receptor located in the membrane. During the development of various organs, including the nervous system, limbs, and liver, KREMEN1 synergizes with the Dkk proteins to inhibit Wnt signaling (PMID: 18505822). KREMEN1 has been reported as a tumor suppressor, preventing cancer cell survival in a ligand-poor environment (PMID: 31069116). Variations and mutations of KREMEN1 have been associated with ectodermal dysplasia and Hand-foot-and-mouth disease (PMID: 34028942; 31911601).

Storage

Storage:

Store at -20°C. Stable for one year after shipment.

Storage Buffer:

PBS with 0.02% sodium azide and 50% glycerol pH 7.3.

Aliquoting is unnecessary for -20°C storage

For technical support and original validation data for this product please contact:

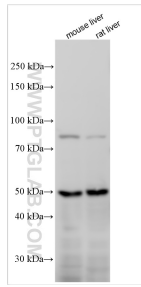
T: 4006900926

E: Proteintech-CN@ptglab.com

W: ptgcn.com

This product is exclusively available under Proteintech Group brand and is not available to purchase from any other manufacturer.

Selected Validation Data



Various lysates were subjected to SDS PAGE followed by western blot with 25434-1-AP (KREMEN1 antibody) at dilution of 1:3000 incubated at room temperature for 1.5 hours.