

For Research Use Only

RRP36 Polyclonal antibody

Catalog Number: 25440-1-AP



Basic Information

Catalog Number:

25440-1-AP

Size:

850 µg/ml

Source:

Rabbit

Isotype:

IgG

Immunogen Catalog Number:

AG22014

GenBank Accession Number:

BC011933

GeneID (NCBI):

88745

UNIPROT ID:

Q96EU6

Full Name:

chromosome 6 open reading frame

153

Calculated MW:

259 aa, 30 kDa

Observed MW:

30-40 kDa

Purification Method:

Antigen affinity purification

Recommended Dilutions:

WB 1:500-1:1000

IF/ICC 1:50-1:500

Applications

Tested Applications:

IF/ICC, WB, ELISA

Species Specificity:

human

Positive Controls:

WB : MCF-7 cells, HEK-293 cells

IF/ICC : MCF-7 cells,

Background Information

Storage

Storage:

Store at -20°C. Stable for one year after shipment.

Storage Buffer:

PBS with 0.02% sodium azide and 50% glycerol pH 7.3.

Aliquoting is unnecessary for -20°C storage

For technical support and original validation data for this product please contact:

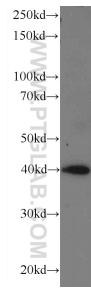
T: 4006900926

E: Proteintech-CN@ptglab.com

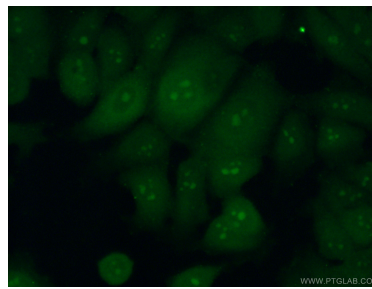
W: ptgcn.com

This product is exclusively available under Proteintech Group brand and is not available to purchase from any other manufacturer.

Selected Validation Data



MCF-7 cells were subjected to SDS PAGE followed by western blot with 25440-1-AP (RRP36 antibody) at dilution of 1:600 incubated at room temperature for 1.5 hours.



Immunofluorescent analysis of (10% Formaldehyde) fixed MCF-7 cells using 25440-1-AP (RRP36 antibody) at dilution of 1:50 and Alexa Fluor 488-conjugated AffiniPure Goat Anti-Rabbit IgG(H+L).