

For Research Use Only

# C3orf38 Polyclonal antibody

Catalog Number: 25510-1-AP



## Basic Information

<b>Catalog Number:</b> 25510-1-AP	<b>GenBank Accession Number:</b> BC024188	<b>Purification Method:</b> Antigen affinity purification
<b>Size:</b> 950 µg/ml	<b>GeneID (NCBI):</b> 285237	<b>Recommended Dilutions:</b> WB 1:500-1:1000 IF/ICC 1:20-1:200
<b>Source:</b> Rabbit	<b>UNIPROT ID:</b> Q5JPI3	
<b>Isotype:</b> IgG	<b>Full Name:</b> chromosome 3 open reading frame 38	
<b>Immunogen Catalog Number:</b> AG22020	<b>Calculated MW:</b> 329 aa, 37 kDa	
	<b>Observed MW:</b> 35-37 kDa	

## Applications

<b>Tested Applications:</b> WB, IF/ICC, ELISA	<b>Positive Controls:</b> WB : L02 cells, Neuro-2a cells IF/ICC : L02 cells,
<b>Species Specificity:</b> human, mouse	

## Background Information

### Storage

**Storage:**  
Store at -20°C. Stable for one year after shipment.  
**Storage Buffer:**  
PBS with 0.02% sodium azide and 50% glycerol pH 7.3.  
Aliquoting is unnecessary for -20°C storage

For technical support and original validation data for this product please contact:

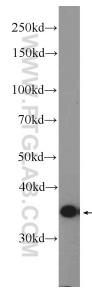
T: 4006900926

E: [Proteintech-CN@ptglab.com](mailto:Proteintech-CN@ptglab.com)

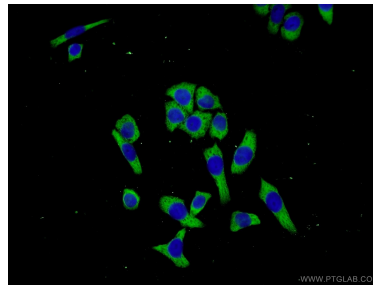
W: [ptgcn.com](http://ptgcn.com)

This product is exclusively available under Proteintech Group brand and is not available to purchase from any other manufacturer.

## Selected Validation Data



L02 cells were subjected to SDS PAGE followed by western blot with 25510-1-AP (C3orf38 Antibody) at dilution of 1:600 incubated at room temperature for 1.5 hours.



Immunofluorescent analysis of L02 cells using 25510-1-AP (C3orf38 antibody) at dilution of 1:50 and Alexa Fluor 488-conjugated AffiniPure Goat Anti-Rabbit IgG(H+L).