

For Research Use Only

SMCHD1 Polyclonal antibody

Catalog Number: 25589-1-AP **1 Publications**



Basic Information

Catalog Number: 25589-1-AP	GenBank Accession Number: BC035774	Purification Method: Antigen affinity purification
Size: 350 µg/ml	GeneID (NCBI): 23347	Recommended Dilutions: WB 1:500-1:1000
Source: Rabbit	UNIPROT ID: A6NHR9	IP 0.5-4.0 µg for 1.0-3.0 mg of total protein lysate
Isotype: IgG	Full Name: structural maintenance of chromosomes flexible hinge domain containing 1	IHC 1:50-1:500
Immunogen Catalog Number: AG22293	Calculated MW: 2005 aa, 226 kDa	IF/ICC 1:50-1:500
	Observed MW: 220 kDa	

Applications

Tested Applications: WB, IP, IF/ICC, IHC, ELISA	Positive Controls: WB : HeLa cells, HEK-293 cells
Cited Applications: WB, IP	IP : HeLa cells,
Species Specificity: human, mouse	IHC : mouse skeletal muscle tissue,
Cited Species: human, mouse	IF/ICC : HEK-293 cells,

Note-IHC: suggested antigen retrieval with TE buffer pH 9.0; (*) Alternatively, antigen retrieval may be performed with citrate buffer pH 6.0

Background Information

Structural maintenance of chromosomes flexible hinge domain containing 1 (SMCHD1) is considered a non-canonical member of the SMC family owing to differences in its type of ATPase domain and in its overall linear domain architecture (PMID: 32779700). SMCHD1 is best known for its role in promoting DNA methylation and gene silencing, with apparent roles in X chromosome inactivation, imprinted gene regulation, and autosomal gene cluster repression (PMID: 31668908). Variations in the SMCHD1 gene are associated with two debilitating human disorders, facioscapulohumeral muscular dystrophy (FSHD) and Bosma arhinia microphthalmia syndrome (BAMS)

Notable Publications

Author	Pubmed ID	Journal	Application
Shenli Yuan	36068616	Genome Biol	WB,IP

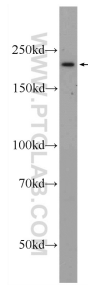
Storage

Storage:
Store at -20°C. Stable for one year after shipment.
Storage Buffer:
PBS with 0.02% sodium azide and 50% glycerol pH 7.3.
Aliquoting is unnecessary for -20°C storage

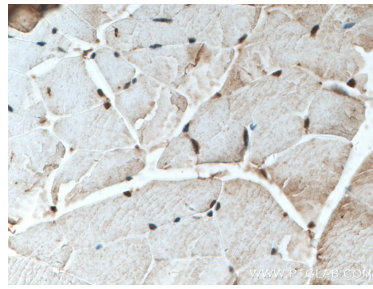
For technical support and original validation data for this product please contact:
T: 4006900926 E: Proteintech-CN@ptglab.com W: ptgcn.com

This product is exclusively available under Proteintech Group brand and is not available to purchase from any other manufacturer.

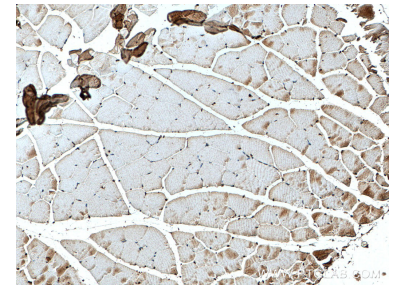
Selected Validation Data



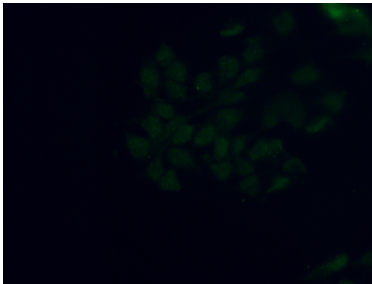
HeLa cells were subjected to SDS PAGE followed by western blot with 25589-1-AP (SMCHD1 Antibody) at dilution of 1:600 incubated at room temperature for 1.5 hours.



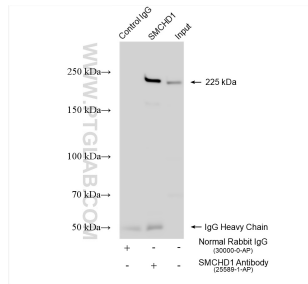
Immunohistochemical analysis of paraffin-embedded mouse skeletal muscle tissue slide using 25589-1-AP (SMCHD1 antibody) at dilution of 1:200 (under 40x lens. Heat mediated antigen retrieval with Tris-EDTA buffer (pH 9.0).



Immunohistochemical analysis of paraffin-embedded mouse skeletal muscle tissue slide using 25589-1-AP (SMCHD1 antibody) at dilution of 1:200 (under 10x lens. Heat mediated antigen retrieval with Tris-EDTA buffer (pH 9.0).



Immunofluorescent analysis of (4% PFA) fixed HEK-293 cells using 25589-1-AP (SMCHD1 antibody) at dilution of 1:200 and Alexa Fluor 488-Conjugated AffiniPure Goat Anti-Rabbit IgG(H+L).



IP result of anti-SMCHD1 (IP:25589-1-AP, 4ug; Detection:25589-1-AP 1:1000) with HeLa cells lysate 1085 ug.