

For Research Use Only

# ZCRB1 Polyclonal antibody

Catalog Number: 25629-1-AP **2 Publications**



## Basic Information

**Catalog Number:**

25629-1-AP

**Size:**

600 ug/ml

**Source:**

Rabbit

**Isotype:**

IgG

**Immunogen Catalog Number:**

AG22095

**GenBank Accession Number:**

BC022543

**GeneID (NCBI):**

85437

**UNIPROT ID:**

Q8TBF4

**Full Name:**

zinc finger CCHC-type and RNA binding motif 1

**Calculated MW:**

217 aa, 25 kDa

**Observed MW:**

25-30 kDa

**Purification Method:**

Antigen affinity purification

**Recommended Dilutions:**

WB 1:500-1:2000

IF/ICC 1:20-1:200

## Applications

**Tested Applications:**

WB, IF/ICC, ELISA

**Cited Applications:**

WB

**Species Specificity:**

human, mouse, rat

**Cited Species:**

human

**Positive Controls:**

WB : ARPE-19 cells, Neuro-2a cells, Raji cells, SMMC-7721 cells, mouse testis tissue, rat testis tissue

IF/ICC : HepG2 cells,

## Background Information

### Notable Publications

Author	Pubmed ID	Journal	Application
Jian Song	35538499	J Exp Clin Cancer Res	WB
Geralde Powell-Rodgers	39149385	bioRxiv	WB

## Storage

**Storage:**

Store at -20°C. Stable for one year after shipment.

**Storage Buffer:**

PBS with 0.02% sodium azide and 50% glycerol pH 7.3.

Aliquoting is unnecessary for -20°C storage

For technical support and original validation data for this product please contact:

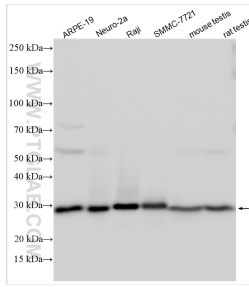
T: 4006900926

E: [Proteintech-CN@ptglab.com](mailto:Proteintech-CN@ptglab.com)

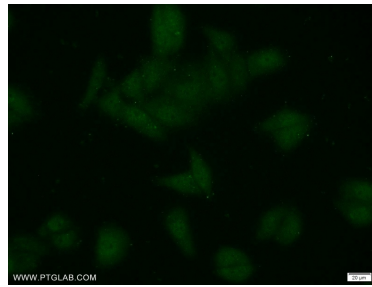
W: [ptgcn.com](http://ptgcn.com)

**This product is exclusively available under Proteintech Group brand and is not available to purchase from any other manufacturer.**

## Selected Validation Data



Various lysates were subjected to SDS PAGE followed by western blot with 25629-1-AP (ZCRB1 antibody) at dilution of 1:1000 incubated at room temperature for 1.5 hours.



Immunofluorescent analysis of HepG2 cells using 25629-1-AP (ZCRB1 antibody) at dilution of 1:50 and Alexa Fluor 488-conjugated AffiniPure Goat Anti-Rabbit IgG(H+L).