

For Research Use Only

Mammaglobin A Polyclonal antibody

Catalog Number: 25645-1-AP



Basic Information

Catalog Number: 25645-1-AP	GenBank Accession Number: BC128252	Purification Method: Antigen affinity purification
Size: 900 µg/ml	GeneID (NCBI): 4250	Recommended Dilutions: IHC 1:20-1:200
Source: Rabbit	UNIPROT ID: Q13296	
Isotype: IgG	Full Name: secretoglobin, family 2A, member 2	
Immunogen Catalog Number: AG22324	Calculated MW: 93 aa, 10 kDa	

Applications

Tested Applications: IHC, ELISA	Positive Controls: IHC : human breast cancer tissue, human breast tissue
Species Specificity: human	
Note-IHC: suggested antigen retrieval with TE buffer pH 9.0; (*) Alternatively, antigen retrieval may be performed with citrate buffer pH 6.0	

Background Information

SCGB2A2, also known as mammaglobin A, is a member of the secretoglobin superfamily. It is a breast cancer-associated antigen almost exclusively over-expressed in primary and metastatic human breast cancers, making it a specific molecular marker and a potential therapeutic target for breast cancer. SCGB2A2 is a 93-amino acid protein with a calculated molecular weight of 10.5 kDa.

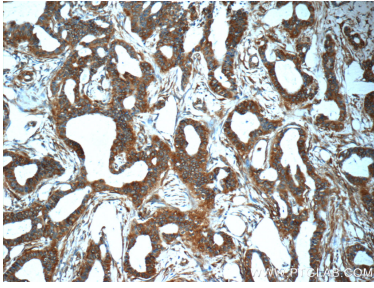
Storage

Storage:
Store at -20°C. Stable for one year after shipment.
Storage Buffer:
PBS with 0.02% sodium azide and 50% glycerol pH 7.3.
Aliquoting is unnecessary for -20°C storage

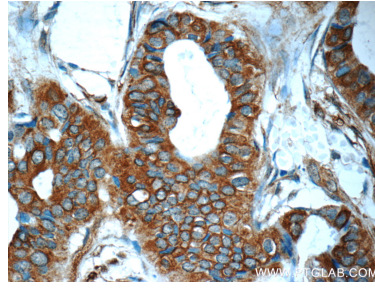
For technical support and original validation data for this product please contact:
T: 4006900926 E: Proteintech-CN@ptglab.com W: ptgcn.com

This product is exclusively available under Proteintech Group brand and is not available to purchase from any other manufacturer.

Selected Validation Data



Immunohistochemical analysis of paraffin-embedded human breast cancer tissue slide using 25645-1-AP (Mammaglobin A antibody at dilution of 1:50) (under 10x lens).



Immunohistochemical analysis of paraffin-embedded human breast cancer tissue slide using 25645-1-AP (Mammaglobin A antibody at dilution of 1:50) (under 40x lens).