

For Research Use Only

# MAP6/STOP Polyclonal antibody

Catalog Number: 25717-1-AP



## Basic Information

<b>Catalog Number:</b> 25717-1-AP	<b>GenBank Accession Number:</b> BC139780	<b>Purification Method:</b> Antigen affinity purification
<b>Size:</b> 300 µg/ml	<b>GeneID (NCBI):</b> 4135	<b>Recommended Dilutions:</b> WB 1:1000-1:6000 IHC 1:50-1:500 IF/ICC 1:200-1:800
<b>Source:</b> Rabbit	<b>UNIPROT ID:</b> Q96JE9	
<b>Isotype:</b> IgG	<b>Full Name:</b> microtubule-associated protein 6	
<b>Immunogen Catalog Number:</b> AG22471	<b>Calculated MW:</b> 813 aa, 87 kDa	
	<b>Observed MW:</b> 120 kDa	

## Applications

**Tested Applications:**  
WB, IF/ICC, IHC, ELISA

**Species Specificity:**  
human, mouse

**Note-IHC: suggested antigen retrieval with TE buffer pH 9.0; (\*) Alternatively, antigen retrieval may be performed with citrate buffer pH 6.0**

**Positive Controls:**

**WB :** mouse retina tissue, mouse brain tissue, mouse cerebellum tissue

**IHC :** mouse cerebellum tissue,

**IF/ICC :** PC-12 cells,

## Background Information

MAP6, also named STOP protein, has been isolated from brain preparations but is also present in other tissues such as the skeletal muscles and heart. MAP6 is a calmodulin-binding and calmodulin-regulated protein that is involved in microtubule stabilization. Different isoforms of STOP protein arise from alternative mRNA splicing and transcription initiation sites using a single gene. The neuronal MAP6 isoforms N-STOP (120 kDa) and E-STOP (80 kDa), the astrocyte MAP6 isoform A-STOP (60 kDa), and a fibroblastic MAP6 isoform F-STOP (48 kDa) have been identified.

## Storage

**Storage:**

Store at -20°C. Stable for one year after shipment.

**Storage Buffer:**

PBS with 0.02% sodium azide and 50% glycerol pH 7.3.

Aliquoting is unnecessary for -20°C storage

For technical support and original validation data for this product please contact:

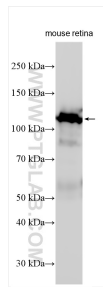
T: 4006900926

E: [Proteintech-CN@ptglab.com](mailto:Proteintech-CN@ptglab.com)

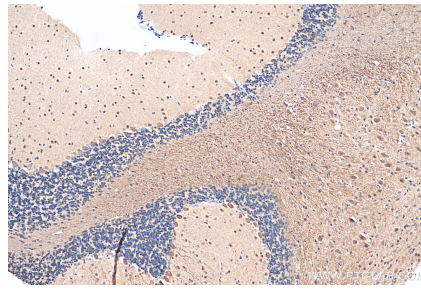
W: [ptgcn.com](http://ptgcn.com)

**This product is exclusively available under Proteintech Group brand and is not available to purchase from any other manufacturer.**

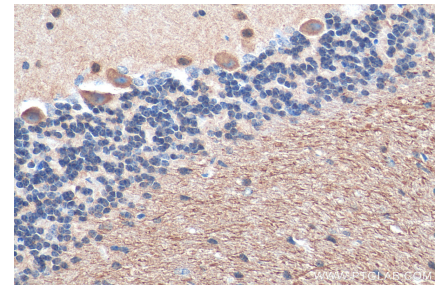
## Selected Validation Data



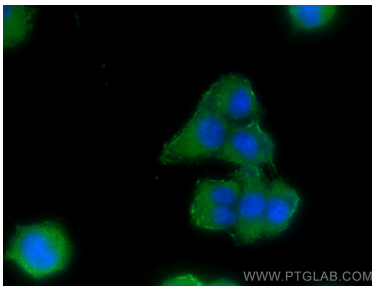
mouse retina tissue were subjected to SDS PAGE followed by western blot with 25717-1-AP (MAP6/STOP antibody) at dilution of 1:3000 incubated at room temperature for 1.5 hours.



Immunohistochemical analysis of paraffin-embedded mouse cerebellum tissue slide using 25717-1-AP (MAP6/STOP antibody) at dilution of 1:200 (under 10x lens). Heat mediated antigen retrieval with Tris-EDTA buffer (pH 9.0).



Immunohistochemical analysis of paraffin-embedded mouse cerebellum tissue slide using 25717-1-AP (MAP6/STOP antibody) at dilution of 1:200 (under 40x lens). Heat mediated antigen retrieval with Tris-EDTA buffer (pH 9.0).



Immunofluorescent analysis of (-20°C Methanol) fixed PC-12 cells using MAP6/STOP antibody (25717-1-AP) at dilution of 1:400 and CoraLite®488-Conjugated AffiniPure Goat Anti-Rabbit IgG(H+L).