

For Research Use Only

EPHA2 Polyclonal antibody

Catalog Number: 25749-1-AP **1 Publications**



Basic Information

Catalog Number: 25749-1-AP	GenBank Accession Number: BC037166	Purification Method: Antigen affinity purification
Size: 350 ug/ml	GeneID (NCBI): 1969	Recommended Dilutions: WB 1:500-1:2000
Source: Rabbit	UNIPROT ID: P29317	
Isotype: IgG	Full Name: EPH receptor A2	
Immunogen Catalog Number: AG22661	Calculated MW: 976 aa, 108 kDa	
	Observed MW: 125-130 kDa	

Applications

Tested Applications: WB, ELISA	Positive Controls: WB : A375 cells, A431 cells
Cited Applications: WB	
Species Specificity: human	
Cited Species: human	

Background Information

EPHA2 (Ephrin type-A receptor 2) belongs to the receptor tyrosine kinase (RTK) family, with 16 known receptors and 9 known membrane-bound ligands in all species. Based on the extracellular domain sequence homology, structure, and binding affinity, Eph receptors and their ephrin ligands can be divided into A and B subtypes (PMID: 33962882). EPHA2 contains a conserved N-terminal ligand-bound extracellular domain, a transmembrane domain, and a conserved tyrosine kinase domain (PMID: 8070404).

Notable Publications

Author	Pubmed ID	Journal	Application
Yingjen Jeffrey Wu	28739685	Anticancer Res	WB

Storage

Storage:
Store at -20°C. Stable for one year after shipment.
Storage Buffer:
PBS with 0.02% sodium azide and 50% glycerol pH 7.3.
Aliquoting is unnecessary for -20°C storage

For technical support and original validation data for this product please contact:

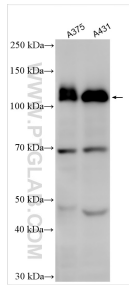
T: 4006900926

E: Proteintech-CN@ptglab.com

W: ptgcn.com

This product is exclusively available under Proteintech Group brand and is not available to purchase from any other manufacturer.

Selected Validation Data



Various lysates were subjected to SDS PAGE followed by western blot with 25749-1-AP (EPHA2 antibody) at dilution of 1:1000 incubated at room temperature for 1.5 hours.