

For Research Use Only

MTCL1 Polyclonal antibody

Catalog Number: 25780-1-AP



Basic Information

Catalog Number: 25780-1-AP	GenBank Accession Number: BC040542	Purification Method: Antigen affinity purification
Size: 550 µg/ml	GeneID (NCBI): 23255	Recommended Dilutions: WB 1:500-1:1000
Source: Rabbit	UNIPROT ID: Q9Y4B5	
Isotype: IgG	Full Name: KIAA0802	
Immunogen Catalog Number: AG22718	Calculated MW: 1905 aa, 209 kDa	
	Observed MW: 250 kDa	

Applications

Tested Applications: WB, ELISA	Positive Controls: WB : HEK-293 cells, HeLa cells, MDCK cells
Species Specificity: human, Canine	

Background Information

Microtubule cross - linking factor 1 (MTCL1) is a MT - regulating protein that plays essential roles in accumulating the non-centrosomal MTs into the apicobasal MT bundles. MTCL1, identified as a binding protein of the cell polarity - regulating kinase, PAR - 1b/MARK2, is recruited to the Golgi membranes through interactions with CLASPs and AKAP450/CG-NAP, and promotes microtubule growth from the Golgi membrane. Western blot analysis detected MTCL1 at an apparent molecular mass of 250 kDa as indicated in the literature (PMID: 23902687, 28283581).

Storage

Storage:
Store at -20°C. Stable for one year after shipment.
Storage Buffer:
PBS with 0.02% sodium azide and 50% glycerol pH 7.3.
Aliquoting is unnecessary for -20°C storage

For technical support and original validation data for this product please contact:

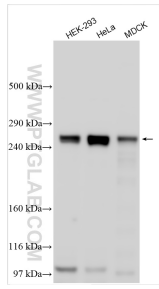
T: 4006900926

E: Proteintech-CN@ptglab.com

W: ptgcn.com

This product is exclusively available under Proteintech Group brand and is not available to purchase from any other manufacturer.

Selected Validation Data



Various lysates were subjected to SDS PAGE followed by western blot with 25780-1-AP (MTCL1 antibody) at dilution of 1:800 incubated at room temperature for 1.5 hours.