

For Research Use Only

# C21orf45 Polyclonal antibody, PBS Only

Catalog Number: 25832-1-PBS



## Basic Information

Catalog Number:

25832-1-PBS

Size:

1 mg/ml

Source:

Rabbit

Isotype:

IgG

Immunogen Catalog Number:

AG22922

GenBank Accession Number:

BC042917

GeneID (NCBI):

54069

UNIPROT ID:

Q9NYP9

Full Name:

chromosome 21 open reading frame

45

Calculated MW:

233 aa, 26 kDa

Observed MW:

105 kDa

Purification Method:

Antigen affinity purification

## Applications

Tested Applications:

WB, IF/ICC, Indirect ELISA

Species Specificity:

human, mouse

## Background Information

C21orf45, also named as MIS18A, C21orf46 and FASP1, is required for recruitment of CENPA to centromeres and normal chromosome segregation during mitosis. C21orf45 has dimer (~52 kDa) and heterodimer (~105 kDa) forms.

## Storage

Storage:

Store at -80°C.

**The product is shipped with ice packs. Upon receipt, store it immediately at -80°C**

Storage Buffer:

PBS Only

For technical support and original validation data for this product please contact:

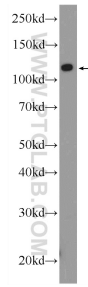
T: 4006900926

E: [Proteintech-CN@ptglab.com](mailto:Proteintech-CN@ptglab.com)

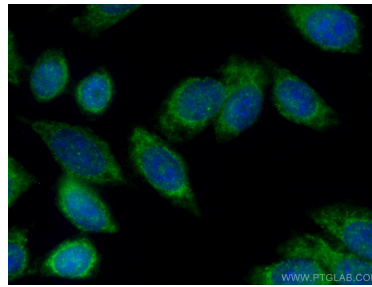
W: [ptgcn.com](http://ptgcn.com)

**This product is exclusively available under Proteintech Group brand and is not available to purchase from any other manufacturer.**

## Selected Validation Data



HeLa cells were subjected to SDS PAGE followed by western blot with 25832-1-AP (C21orf45 Antibody) at dilution of 1:300 incubated at room temperature for 1.5 hours. This data was developed using the same antibody clone with 25832-1-PBS in a different storage buffer formulation.



Immunofluorescent analysis of (-20°C Methanol) fixed HepG2 cells using C21orf45 antibody (25832-1-AP) at dilution of 1:400 and CoraLite® 488-Conjugated AffiniPure Goat Anti-Rabbit IgG(H+L). This data was developed using the same antibody clone with 25832-1-PBS in a different storage buffer formulation.