

For Research Use Only

RGSL1 Polyclonal antibody

Catalog Number: 25836-1-AP



Basic Information

Catalog Number: 25836-1-AP	GenBank Accession Number: BC142944	Purification Method: Antigen affinity purification
Size: 350 µg/ml	GeneID (NCBI): 353299	Recommended Dilutions: WB 1:500-1:1000 IHC 1:50-1:500
Source: Rabbit	UNIPROT ID: A5PLK6	
Isotype: IgG	Full Name: regulator of G-protein signaling like 1	
Immunogen Catalog Number: AG20269	Calculated MW: 1076 aa, 126 kDa	
	Observed MW: 125 kDa	

Applications

Tested Applications:

IHC, WB, ELISA

Species Specificity:

human, mouse

Note-IHC: suggested antigen retrieval with TE buffer pH 9.0; (*) Alternatively, antigen retrieval may be performed with citrate buffer pH 6.0

Positive Controls:

WB : mouse brain tissue,

IHC : human testis tissue,

Background Information

RGSL1, also named as RGSL and RGSL2, belongs to the RSG family. RGSL1 is involved in the G-protein signaling regulation with a suggested role in prostate carcinogenesis (PMID: 28662289). RGSL1 has 6 isoforms with the molecular mass of 47-63, 71 and 126 kDa. RGSL1 may interact with other markers in the development of breast cancer (PMID: 21135262).

Storage

Storage:

Store at -20°C. Stable for one year after shipment.

Storage Buffer:

PBS with 0.02% sodium azide and 50% glycerol pH 7.3.

Aliquoting is unnecessary for -20°C storage

For technical support and original validation data for this product please contact:

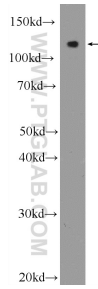
T: 4006900926

E: Proteintech-CN@ptglab.com

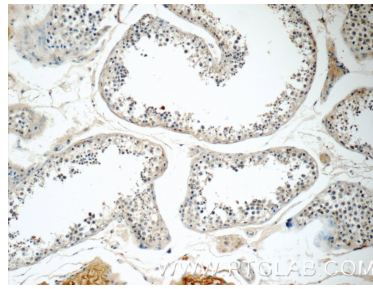
W: ptgcn.com

This product is exclusively available under Proteintech Group brand and is not available to purchase from any other manufacturer.

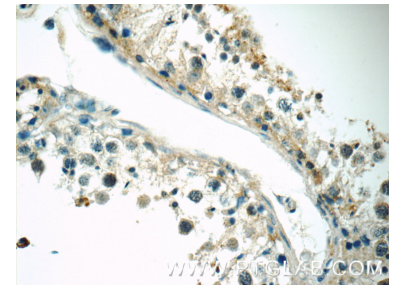
Selected Validation Data



mouse brain tissue were subjected to SDS PAGE followed by western blot with 25836-1-AP (RGSL1 Antibody) at dilution of 1:600 incubated at room temperature for 1.5 hours.



Immunohistochemical analysis of paraffin-embedded human testis tissue slide using 25836-1-AP (RGSL1 Antibody) at dilution of 1:100 (under 10x lens).



Immunohistochemical analysis of paraffin-embedded human testis tissue slide using 25836-1-AP (RGSL1 Antibody) at dilution of 1:100 (under 40x lens).