

For Research Use Only

# JPH1 Polyclonal antibody

Catalog Number: 25979-1-AP



## Basic Information

<b>Catalog Number:</b> 25979-1-AP	<b>GenBank Accession Number:</b> BC140875	<b>Purification Method:</b> Antigen affinity purification
<b>Size:</b> 750 µg/ml	<b>GeneID (NCBI):</b> 56704	<b>Recommended Dilutions:</b> WB 1:1000-1:4000 IHC 1:50-1:500
<b>Source:</b> Rabbit	<b>UNIPROT ID:</b> Q9HDC5	
<b>Isotype:</b> IgG	<b>Full Name:</b> junctophilin 1	
<b>Immunogen Catalog Number:</b> AG23270	<b>Calculated MW:</b> 72 kDa	
	<b>Observed MW:</b> 72 kDa	

## Applications

**Tested Applications:**  
IHC, WB, ELISA

**Species Specificity:**  
human, mouse, rat

**Note-IHC: suggested antigen retrieval with TE buffer pH 9.0; (\*) Alternatively, antigen retrieval may be performed with citrate buffer pH 6.0**

**Positive Controls:**

WB : HEK-293 cells, mouse heart tissue, rat heart tissue

IHC : human skeletal muscle tissue, human skin tissue

## Background Information

Junctophilin-1 is a protein that in humans is encoded by the JPH1 gene. This gene is a member of the junctophilin gene family. Junctional complexes between the plasma membrane and endoplasmic/sarcoplasmic reticulum are a common feature of all excitable cell types and mediate cross talk between cell surface and intracellular ion channels. The protein encoded by this gene is a component of junctional complexes and is composed of a C-terminal hydrophobic segment spanning the endoplasmic/sarcoplasmic reticulum membrane and a remaining cytoplasmic domain that shows specific affinity for the plasma membrane.

## Storage

**Storage:**

Store at -20°C. Stable for one year after shipment.

**Storage Buffer:**

PBS with 0.02% sodium azide and 50% glycerol pH 7.3.

Aliquoting is unnecessary for -20°C storage

For technical support and original validation data for this product please contact:

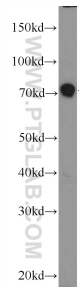
T: 4006900926

E: [Proteintech-CN@ptglab.com](mailto:Proteintech-CN@ptglab.com)

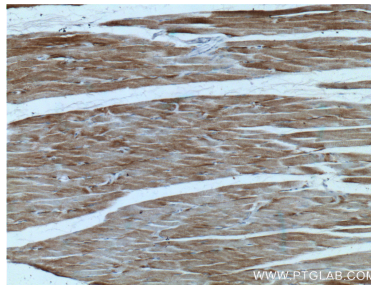
W: [ptgcn.com](http://ptgcn.com)

**This product is exclusively available under Proteintech Group brand and is not available to purchase from any other manufacturer.**

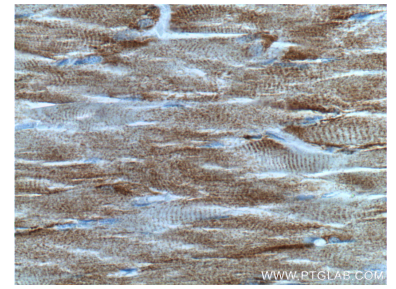
## Selected Validation Data



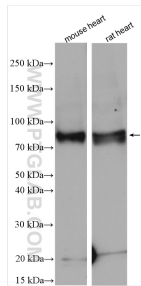
HEK-293 cells were subjected to SDS PAGE followed by western blot with 25979-1-AP (JPH1 Antibody) at dilution of 1:2000 incubated at room temperature for 1.5 hours.



Immunohistochemical analysis of paraffin-embedded human skeletal muscle tissue slide using 25979-1-AP (JPH1 antibody) at dilution of 1:200 (under 10x lens).



Immunohistochemical analysis of paraffin-embedded human skeletal muscle tissue slide using 25979-1-AP (JPH1 antibody) at dilution of 1:200 (under 40x lens).



Various lysates were subjected to SDS PAGE followed by western blot with 25979-1-AP (JPH1 antibody) at dilution of 1:1000 incubated at room temperature for 1.5 hours.