

For Research Use Only

# RASIP1 Polyclonal antibody

Catalog Number: 26064-1-AP



## Basic Information

<b>Catalog Number:</b> 26064-1-AP	<b>GenBank Accession Number:</b> BC021860	<b>Purification Method:</b> Antigen affinity purification
<b>Size:</b> 300 ug/ml	<b>GeneID (NCBI):</b> 54922	<b>Recommended Dilutions:</b> WB 1:200-1:1000 IHC 1:50-1:500 IF/ICC 1:200-1:800
<b>Source:</b> Rabbit	<b>UNIPROT ID:</b> Q5U651	
<b>Isotype:</b> IgG	<b>Full Name:</b> Ras interacting protein 1	
<b>Immunogen Catalog Number:</b> AG22036	<b>Calculated MW:</b> 963 aa, 103 kDa	
	<b>Observed MW:</b> 115 kDa	

## Applications

**Tested Applications:**  
WB, IHC, IF/ICC, ELISA

**Species Specificity:**  
human, mouse, rat

**Note-IHC: suggested antigen retrieval with TE buffer pH 9.0; (\*) Alternatively, antigen retrieval may be performed with citrate buffer pH 6.0**

**Positive Controls:**

WB : mouse lung tissue, NIH/3T3 cells

IHC : human heart tissue, human lung tissue

IF/ICC : HepG2 cells,

## Background Information

RASIP1, also named as Ras-interacting protein 1 or Rain, is a 963 amino acid protein, which contains one dilute domain and one Ras-associating domain. RASIP1 is highly expressed in heart and detected at lower levels in placenta and pancreas. RASIP1 is required for the proper formation of vascular structures that develop via both vasculogenesis and angiogenesis. RASIP1 acts as a critical and vascular-specific regulator of GTPase signaling, cell architecture, and adhesion, which is essential for endothelial cell morphogenesis and blood vessel tubulogenesis.

## Storage

**Storage:**

Store at -20°C. Stable for one year after shipment.

**Storage Buffer:**

PBS with 0.02% sodium azide and 50% glycerol pH 7.3.

Aliquoting is unnecessary for -20°C storage

For technical support and original validation data for this product please contact:

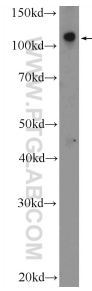
T: 4006900926

E: Proteintech-CN@ptglab.com

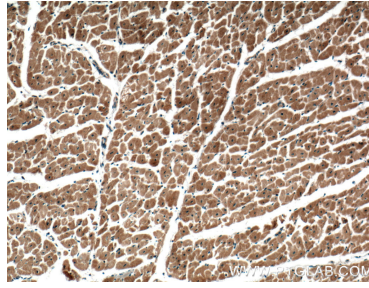
W: ptgcn.com

**This product is exclusively available under Proteintech Group brand and is not available to purchase from any other manufacturer.**

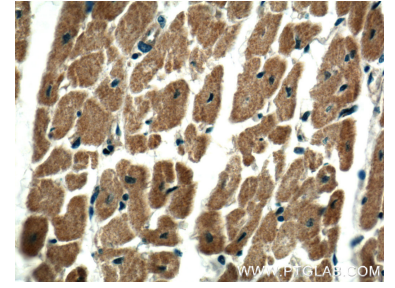
## Selected Validation Data



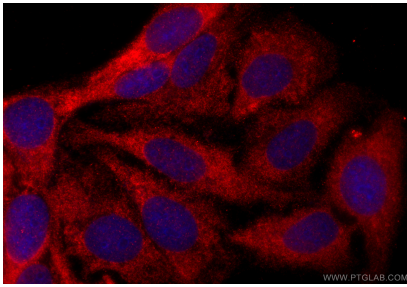
mouse lung tissue were subjected to SDS PAGE followed by western blot with 26064-1-AP (RASIP1 Antibody) at dilution of 1:300 incubated at room temperature for 1.5 hours.



Immunohistochemical analysis of paraffin-embedded human heart tissue slide using 26064-1-AP (RASIP1 Antibody) at dilution of 1:200 (under 10x lens).



Immunohistochemical analysis of paraffin-embedded human heart tissue slide using 26064-1-AP (RASIP1 Antibody) at dilution of 1:200 (under 40x lens).



Immunofluorescent analysis of (-20°C Ethanol) fixed HepG2 cells using RASIP1 antibody (26064-1-AP) at dilution of 1:400 and CoraLite®594-Conjugated Goat Anti-Rabbit IgG(H+L) (SA00013-4).