

For Research Use Only

PPAPDC2 Polyclonal antibody

Catalog Number: 26234-1-AP



Basic Information

Catalog Number:

26234-1-AP

Size:

1100 µg/ml

Source:

Rabbit

Isotype:

IgG

Immunogen Catalog Number:

AG23856

GenBank Accession Number:

BC038108

GeneID (NCBI):

403313

UNIPROT ID:

Q8IY26

Full Name:

phosphatidic acid phosphatase type 2 domain containing 2

Observed MW:

32 kDa

Purification Method:

Antigen affinity purification

Recommended Dilutions:

IP 0.5-4.0 µg for 1.0-3.0 mg of total protein lysate

IF/ICC 1:50-1:500

Applications

Tested Applications:

IF/ICC, IP, ELISA

Species Specificity:

human

Positive Controls:

IP : HepG2 cells,

IF/ICC : L02 cells,

Background Information

Storage

Storage:

Store at -20°C. Stable for one year after shipment.

Storage Buffer:

PBS with 0.02% sodium azide and 50% glycerol pH 7.3.

Aliquoting is unnecessary for -20°C storage

For technical support and original validation data for this product please contact:

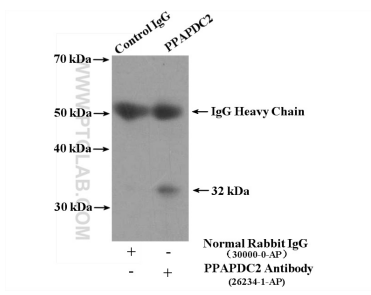
T: 4006900926

E: Proteintech-CN@ptglab.com

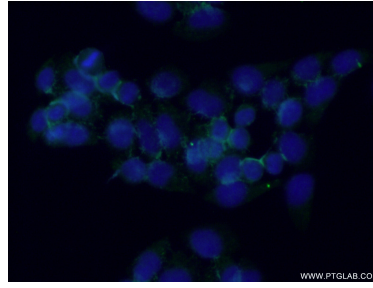
W: ptgcn.com

This product is exclusively available under Proteintech Group brand and is not available to purchase from any other manufacturer.

Selected Validation Data



IP result of anti-PPAPDC2 (IP:26234-1-AP, 4ug; Detection:26234-1-AP 1:300) with HepG2 cells lysate 3600ug.



Immunofluorescent analysis of (-20°C Ethanol) fixed L02 cells using 26234-1-AP (PPAPDC2 antibody) at dilution of 1:50 and Alexa Fluor 488-conjugated AffiniPure Goat Anti-Rabbit IgG(H+L).