

For Research Use Only

# CHM Polyclonal antibody

Catalog Number: 26251-1-AP



## Basic Information

<b>Catalog Number:</b> 26251-1-AP	<b>GenBank Accession Number:</b> BC063522	<b>Purification Method:</b> Antigen affinity purification
<b>Size:</b> 450 ug/ml	<b>GeneID (NCBI):</b> 1121	<b>Recommended Dilutions:</b> WB 1:500-1:3000 IHC 1:50-1:500 IF/ICC 1:200-1:800
<b>Source:</b> Rabbit	<b>UNIPROT ID:</b> P24386	
<b>Isotype:</b> IgG	<b>Full Name:</b> choroideremia (Rab escort protein 1)	
<b>Immunogen Catalog Number:</b> AG23166	<b>Observed MW:</b> 95 kDa	

## Applications

**Tested Applications:**  
WB, IHC, IF/ICC, ELISA

**Species Specificity:**  
human

**Note-IHC: suggested antigen retrieval with TE buffer pH 9.0; (\*) Alternatively, antigen retrieval may be performed with citrate buffer pH 6.0**

### Positive Controls:

**WB:** A431 cells, Caco-2 cells, HEK-293T cells, HeLa cells

**IHC:** mouse placenta tissue,

**IF/ICC:** A431 cells,

## Background Information

CHM (Choroideremia protein) is also named as Rab escort protein 1 (REP-1), TCD and Rab proteins geranylgeranyltransferase component A 1. Choroideremia (CHM) is an X-linked recessive eye disease that is caused by null mutations in REP-1, a gene involved in the regulation of Rab GTPases and intracellular vesicular transport (PMID: 9067750, PMID: 16936131). REP-1 is involved in trafficking of Rab proteins in the cell. And REP-1 binds newly synthesized Rab proteins and presents them to the catalytic site of RabGGTase (PMID: 19427510). RAB-27 in several neurons, such as motor neurons at neuromuscular junctions, requires REP-1 for normal synaptic transmission responsible for aldicarb sensitivity (PMID: 19090809). REP-1 acts as a component of the protein complex. There are two similar Rab escort proteins (75% sequence identity): REP-1 and REP-2. A 95-kDa protein (previously designated component A and now called REP-1) is present (PMID: 8294464, PMID: 17140818).

## Storage

**Storage:**  
Store at -20°C. Stable for one year after shipment.

**Storage Buffer:**  
PBS with 0.02% sodium azide and 50% glycerol pH 7.3.

**Aliquoting is unnecessary for -20°C storage**

For technical support and original validation data for this product please contact:

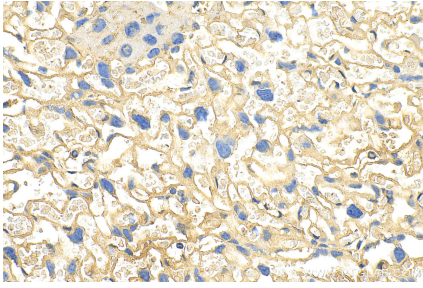
T: 4006900926

E: Proteintech-CN@ptglab.com

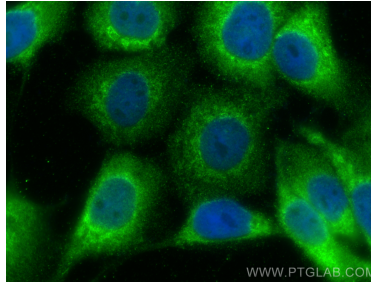
W: ptgcn.com

**This product is exclusively available under Proteintech Group brand and is not available to purchase from any other manufacturer.**

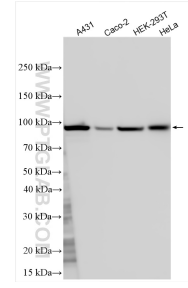
## Selected Validation Data



Immunohistochemical analysis of paraffin-embedded mouse placenta tissue slide using 26251-1-AP (CHM antibody) at dilution of 1:200 (under 40x lens). Heat mediated antigen retrieval with Tris-EDTA buffer (pH 9.0).



Immunofluorescent analysis of (-20°C Methanol) fixed A431 cells using CHM antibody (26251-1-AP) at dilution of 1:400 and Multi-rAb CoraLite® Plus 488-Goat Anti-Rabbit Recombinant Secondary Antibody (H+L) (RGAR002).



Various lysates were subjected to SDS PAGE followed by western blot with 26251-1-AP (CHM antibody) at dilution of 1:1500 incubated at room temperature for 1.5 hours.