

For Research Use Only

# ZBTB1 Polyclonal antibody

Catalog Number: 26287-1-AP

Featured Product

2 Publications



## Basic Information

**Catalog Number:**

26287-1-AP

**Size:**

300 µg/ml

**Source:**

Rabbit

**Isotype:**

IgG

**Immunogen Catalog Number:**

AG23492

**GenBank Accession Number:**

BC050719

**GeneID (NCBI):**

22890

**UNIPROT ID:**

Q9Y2K1

**Full Name:**

zinc finger and BTB domain containing 1

**Observed MW:**

82 kDa

**Purification Method:**

Antigen affinity purification

**Recommended Dilutions:**

WB 1:200-1:1000

IP 0.5-4.0 µg for 1.0-3.0 mg of total protein lysate

IF/ICC 1:50-1:500

## Applications

**Tested Applications:**

IF/ICC, IP, WB, ELISA

**Cited Applications:**

WB

**Species Specificity:**

human

**Cited Species:**

human, mouse

**Positive Controls:**

WB : HeLa cells,

IP : HeLa cells,

IF/ICC : HeLa cells,

## Background Information

## Notable Publications

Author	Pubmed ID	Journal	Application
Hannah J Wiedner	38026174	iScience	WB
Robert T Williams	32268116	Cell Metab	WB

## Storage

**Storage:**

Store at -20°C. Stable for one year after shipment.

**Storage Buffer:**

PBS with 0.02% sodium azide and 50% glycerol pH 7.3.

Aliquoting is unnecessary for -20°C storage

For technical support and original validation data for this product please contact:

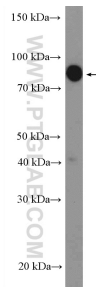
T: 4006900926

E: Proteintech-CN@ptglab.com

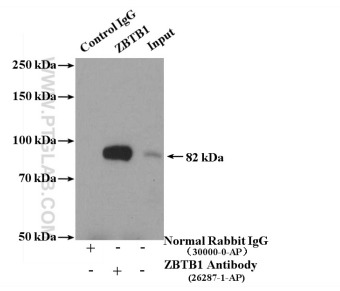
W: ptgcn.com

This product is exclusively available under Proteintech Group brand and is not available to purchase from any other manufacturer.

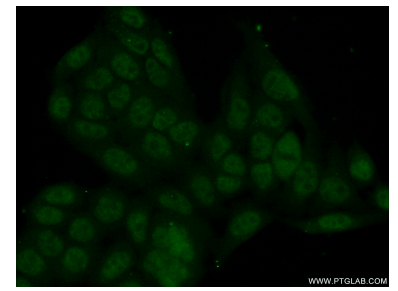
## Selected Validation Data



HeLa cells were subjected to SDS PAGE followed by western blot with 26287-1-AP (ZBTB1 Antibody) at dilution of 1:300 incubated at room temperature for 1.5 hours.



IP result of anti-ZBTB1 (IP:26287-1-AP, 4ug; Detection:26287-1-AP 1:300) with HeLa cells lysate 4000ug.



Immunofluorescent analysis of (10% Formaldehyde) fixed HeLa cells using 26287-1-AP (ZBTB1 antibody) at dilution of 1:50 and Alexa Fluor 488-conjugated AffiniPure Goat Anti-Rabbit IgG(H+L).