

For Research Use Only

CCDC68 Polyclonal antibody

Catalog Number: 26301-1-AP **2 Publications**



Basic Information

Catalog Number: 26301-1-AP	GenBank Accession Number: BC029508	Purification Method: Antigen affinity purification
Size: 800 µg/ml	GeneID (NCBI): 80323	Recommended Dilutions: WB 1:500-1:1000 IHC 1:50-1:500
Source: Rabbit	UNIPROT ID: Q9H2F9	
Isotype: IgG	Full Name: coiled-coil domain containing 68	
Immunogen Catalog Number: AG23622	Observed MW: 47 kDa	

Applications

Tested Applications: IHC, WB, ELISA	Positive Controls: WB : A431 cells, SH-SY5Y cells
Cited Applications: IF	IHC : human testis tissue, human colon tissue
Species Specificity: human	
Cited Species: human	
Note-IHC: suggested antigen retrieval with TE buffer pH 9.0; (*) Alternatively, antigen retrieval may be performed with citrate buffer pH 6.0	

Background Information

Coiled-coil domain containing 68 (CCDC68) demonstrates a tumor-suppressive role in pancreatic ductal adenocarcinoma. (PMID: 25381825)

Notable Publications

Author	Pubmed ID	Journal	Application
Weng Man Chong	32242819	Elife	IF
Qi Li	39018254	Adv Sci (Weinh)	IF

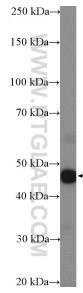
Storage

Storage:
Store at -20°C. Stable for one year after shipment.
Storage Buffer:
PBS with 0.02% sodium azide and 50% glycerol pH 7.3.
Aliquoting is unnecessary for -20°C storage

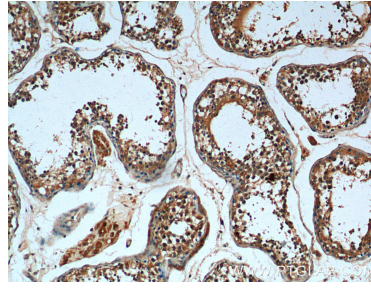
For technical support and original validation data for this product please contact:
T: 4006900926 E: Proteintech-CN@ptglab.com W: ptgcn.com

This product is exclusively available under Proteintech Group brand and is not available to purchase from any other manufacturer.

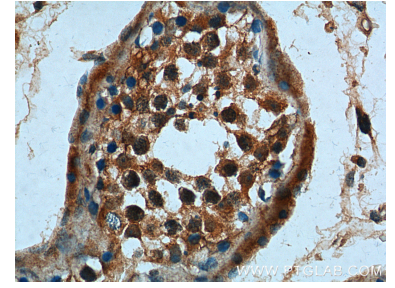
Selected Validation Data



A431 cells were subjected to SDS PAGE followed by western blot with 26301-1-AP (CCDC68 Antibody) at dilution of 1:600 incubated at room temperature for 1.5 hours.



Immunohistochemical analysis of paraffin-embedded human testis tissue slide using 26301-1-AP (CCDC68 Antibody) at dilution of 1:200 (under 10x lens).



Immunohistochemical analysis of paraffin-embedded human testis tissue slide using 26301-1-AP (CCDC68 Antibody) at dilution of 1:200 (under 40x lens).