

For Research Use Only

SLC25A36 Polyclonal antibody

Catalog Number: 26379-1-AP



Basic Information

Catalog Number: 26379-1-AP	GenBank Accession Number: BC014064	Purification Method: Antigen affinity purification
Size: 450 µg/ml	GeneID (NCBI): 55186	Recommended Dilutions: WB 1:1000-1:6000 IF/ICC 1:200-1:800
Source: Rabbit	UNIPROT ID: Q96CQ1	
Isotype: IgG	Full Name: solute carrier family 25, member 36	
Immunogen Catalog Number: AG23894	Observed MW: 32-34 kDa	

Applications

Tested Applications: WB, IF/ICC, ELISA	Positive Controls: WB : mouse brain tissue, rat brain tissue
Species Specificity: human, mouse, rat	IF/ICC : HepG2 cells,

Background Information

SLC25A36 is a pyrimidine nucleotide carrier that belongs to the solute carrier family 25 (SLC25). SLC25A36 transports cytosine and uracil (deoxy)nucleosides monophosphate, diphosphate, and triphosphate via uniporter and antiporter (PMID: 25320081). It plays an important role in maintaining mitochondrial biogenesis. Loss of SLC25A36 in mouse embryonic stem cells (mESCs) is associated with mtDNA loss and mitochondrial dysfunction (PMID: 31036718).

Storage

Storage:
Store at -20°C. Stable for one year after shipment.
Storage Buffer:
PBS with 0.02% sodium azide and 50% glycerol pH 7.3.
Aliquoting is unnecessary for -20°C storage

For technical support and original validation data for this product please contact:

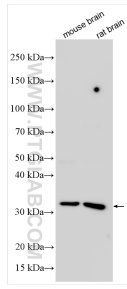
T: 4006900926

E: Proteintech-CN@ptglab.com

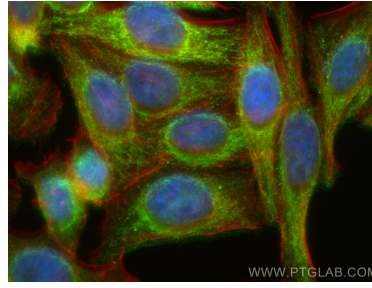
W: ptgcn.com

This product is exclusively available under Proteintech Group brand and is not available to purchase from any other manufacturer.

Selected Validation Data



Various lysates were subjected to SDS PAGE followed by western blot with 26379-1-AP (SLC25A36 antibody) at dilution of 1:3000 incubated at room temperature for 1.5 hours.



Immunofluorescent analysis of (4% PFA) fixed HepG2 cells using SLC25A36 antibody (26379-1-AP) at dilution of 1:400 and Multi-rAb CoraLite® Plus 488-Goat Anti-Rabbit Recombinant Secondary Antibody (H+L) (RGAR002), CL594-phalloidin (red).