

For Research Use Only

WISP3 Polyclonal antibody

Catalog Number: 26406-1-AP



Basic Information

Catalog Number: 26406-1-AP	GenBank Accession Number: BC105941	Purification Method: Antigen affinity purification
Size: 400 ug/ml	GeneID (NCBI): 8838	Recommended Dilutions: WB 1:500-1:3000 IHC 1:50-1:500 IF/ICC 1:50-1:500
Source: Rabbit	UNIPROT ID: O95389	
Isotype: IgG	Full Name: WNT1 inducible signaling pathway protein 3	
Immunogen Catalog Number: AG23999	Observed MW: 39-42 kDa	

Applications

Tested Applications:
WB, IHC, IF/ICC, ELISA

Species Specificity:
human

Note-IHC: suggested antigen retrieval with TE buffer pH 9.0; (*) Alternatively, antigen retrieval may be performed with citrate buffer pH 6.0

Positive Controls:

WB: Caco-2 cells, COLO 320 cells, HeLa cells, HepG2 cells

IHC: human colon cancer tissue,

IF/ICC: MCF-7 cells,

Background Information

WISP3, also known as CCN6. Localized to the Mitochondria, and It is reported that CCN6 is located in the nucleus of breast cancer (PMID: 21262769). It is mainly expressed in adult kidney, testis and fetal kidney, and weakly expressed in placenta, ovary, prostate and small intestine (PMID: 9843955, PMID: 10471507). This gene is overexpressed in colon tumors, and it may be located downstream of WNT1 signaling pathway related to malignant transformation. Mutations of this gene are associated with progressive pseudorheumatoid dysplasia, an autosomal recessive skeletal disorder, indicating that the gene is essential for normal postnatal skeletal growth and cartilage homeostasis. Also it plays an important role in mitochondrial electron transfer and mitochondrial respiration, and may be important in bone growth and cartilage homeostasis after normal birth through its regulation of mitochondrial function (PMID: 27252383, PMID: 10471507). The calculated molecular weight of WISP3 is 39 kDa, and this antibody can recognize the 41 kDa isoform of WISP3.

Storage

Storage:

Store at -20°C. Stable for one year after shipment.

Storage Buffer:

PBS with 0.02% sodium azide and 50% glycerol pH 7.3.

Aliquoting is unnecessary for -20°C storage

For technical support and original validation data for this product please contact:

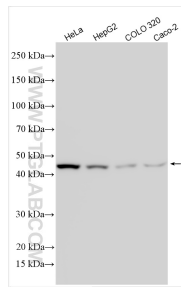
T: 4006900926

E: Proteintech-CN@ptglab.com

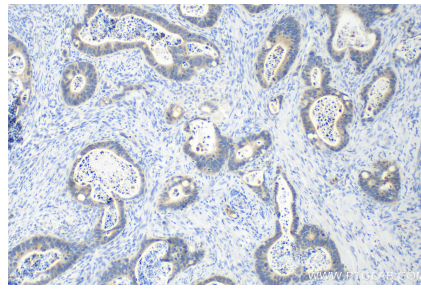
W: ptgcn.com

This product is exclusively available under Proteintech Group brand and is not available to purchase from any other manufacturer.

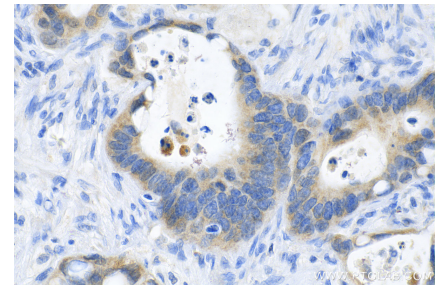
Selected Validation Data



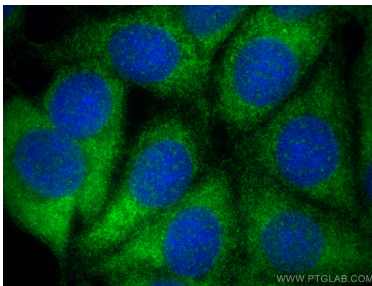
Various lysates were subjected to SDS PAGE followed by western blot with 26406-1-AP (WISP3 antibody) at dilution of 1:1500 incubated at room temperature for 1.5 hours.



Immunohistochemical analysis of paraffin-embedded human colon cancer tissue slide using 26406-1-AP (WISP3 antibody) at dilution of 1:200 (under 10x lens). Heat mediated antigen retrieval with Tris-EDTA buffer (pH 9.0).



Immunohistochemical analysis of paraffin-embedded human colon cancer tissue slide using 26406-1-AP (WISP3 antibody) at dilution of 1:200 (under 40x lens). Heat mediated antigen retrieval with Tris-EDTA buffer (pH 9.0).



Immunofluorescent analysis of (-20°C Methanol) fixed MCF-7 cells using WISP3 antibody (26406-1-AP) at dilution of 1:200 and Multi-rAb CoraLite @ Plus 488-Goat Anti-Rabbit Recombinant Secondary Antibody (H+L) (RGAR002).