

For Research Use Only

# TMEM160 Polyclonal antibody

Catalog Number: 26451-1-AP



## Basic Information

<b>Catalog Number:</b> 26451-1-AP	<b>GenBank Accession Number:</b> BC002907	<b>Purification Method:</b> Antigen affinity purification
<b>Size:</b> 500 ug/ml	<b>GeneID (NCBI):</b> 54958	<b>Recommended Dilutions:</b> WB 1:500-1:1000 IHC 1:50-1:500
<b>Source:</b> Rabbit	<b>UNIPROT ID:</b> Q9NX00	
<b>Isotype:</b> IgG	<b>Full Name:</b> transmembrane protein 160	
<b>Immunogen Catalog Number:</b> AG24915	<b>Calculated MW:</b> 188 aa, 20 kDa	
	<b>Observed MW:</b> 15-20 kDa	

## Applications

### Tested Applications:

WB, IHC, ELISA

### Species Specificity:

human

**Note-IHC: suggested antigen retrieval with TE buffer pH 9.0; (\*) Alternatively, antigen retrieval may be performed with citrate buffer pH 6.0**

### Positive Controls:

WB : HEK-293 cells,

IHC : human intrahepatic cholangiocarcinoma tissue,

## Background Information

The transmembrane protein (TMEM) family encompasses transmembrane proteins that traverse the lipid bilayer and wield critical functions across various cell types, encompassing inflammation and store-operated Ca<sup>2+</sup> entry. TMEM160, a identified transmembrane protein that is localized in the mitochondrial membrane, has been implicated in neuropathic pain.

## Storage

### Storage:

Store at -20°C. Stable for one year after shipment.

### Storage Buffer:

PBS with 0.02% sodium azide and 50% glycerol pH 7.3.

Aliquoting is unnecessary for -20°C storage

For technical support and original validation data for this product please contact:

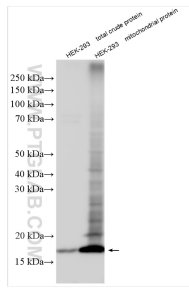
T: 4006900926

E: [Proteintech-CN@ptglab.com](mailto:Proteintech-CN@ptglab.com)

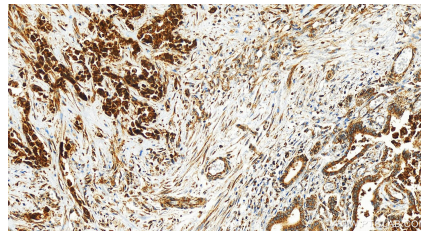
W: [ptgcn.com](http://ptgcn.com)

**This product is exclusively available under Proteintech Group brand and is not available to purchase from any other manufacturer.**

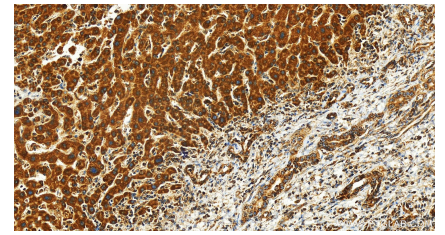
## Selected Validation Data



Various lysates were subjected to SDS PAGE followed by western blot with 26451-1-AP (TMEM160 antibody) at dilution of 1:600 incubated at room temperature for 1.5 hours.



Immunohistochemical analysis of paraffin-embedded human intrahepatic cholangiocarcinoma tissue slide using 26451-1-AP (TMEM160 antibody) at dilution of 1:200 (under 20x lens). Heat mediated antigen retrieval with Tris-EDTA buffer (pH 9.0).



Immunohistochemical analysis of paraffin-embedded human intrahepatic cholangiocarcinoma tissue slide using 26451-1-AP (TMEM160 antibody) at dilution of 1:200 (under 20x lens). Heat mediated antigen retrieval with Tris-EDTA buffer (pH 9.0).